



PRODUCT GUIDE



PRIMERS



STARTERS



FOLIARS



BIOSTIMULANTS

Your Guide to Address
Stress & Achieve
Plant Health.



Foreword

Supporting Ag Retailers - Introducing Cutting-Edge Technology - Bringing ROI to Farmers

Founded as OMEX in the UK in 1976 and OMEX Agriculture Inc. in Winnipeg, Manitoba in 1998, OMEX Corporation is one of the pioneer companies in liquid and suspension fertilizers. In 2024, we celebrated 48 years of business success and in 2023 a milestone accomplishment with 25 years of operation in Canada. This is no small accomplishment as we inch our way to the 50th anniversary of the establishment of the company in two years' time.

Our philosophy has always been to operate globally without losing touch with the local communities we serve. Our people who've been our key to success have deep roots in the Ag and farming communities they provide service to. They are supported in their daily activity by an excellent network of local Ag Retailers, Agronomists and Ag Professionals who advise Canadian farmers on seed, crop inputs and fertility.

Agriculture is at a crossroads with unprecedented weather extremes, market volatility and a whole range of external factors threatening its sustainability and profitability. In these challenging times, implementing cutting-edge technologies in our R&D and finding efficiencies in our state-of-the-art production facility helps us provide the best solutions to Canadian farmers to mitigate stress and overcome risks and uncertainty in their operations. We strive to provide world-

class service in every province, every location, every day. We want to earn and keep your business and we are committed to supporting your farming needs in the short and long term. Don't just take our word for it. Our legacy goes back decades! and, today, we continue to offer the technologies, products and solutions to back those commitments up. Our mission is to be the first-choice manufacturer-distributor for our partners, Ag Retailers and Farmers; our neighbors and communities. At OMEX, we believe every customer's need is important and unique and we use this as a guiding principle to research, test, develop and commercialize the appropriate solution for it. Our team goes the extra mile to get the job done to provide quality products, technical advice, training and service. This is more than a job for us, it's in our DNA. We believe in doing the right thing and being committed to the success of others. We act with integrity and always do what we say we are going to do while being respectful to others. When we interact with you -our customers- we are carefully listening and ensuring we understand your challenges and needs to develop the best solutions possible to solve them. Our commitment to you is to have a straight talk throughout the entire process and to help our Canadian farmers grow the most nutritious, nutrient-dense and healthy grains on the market.

- Your OMEX Health Professionals Team



Contents



Product Analysis & Descriptions.....	2
Application Rates by Crop.....	4

PRIMERS

Primer Zn.....	6
Primer Cu.....	7
Primer Mn.....	8
Pulse Primer.....	9
Pulse Pak.....	10
Primer Canola.....	11
Primer Soybean.....	12

STARTERS

Starter P.....	14
TPA 5-15-5.....	15
OrganoHume.....	16
EDTA's.....	17
FeRRoGreen.....	18
MicroCharger.....	19
Perfuze.....	20
TPA Concentrate.....	21
ImPhos.....	22

FOLIARS

C3.....	24
P3.....	25
Nutri-Boost.....	26
K25/Liquid K Xtra.....	27
Sulfur Products.....	28
SuperB + KB78.....	29
SuperMn+.....	30
uPtaKe IC.....	31
Foliar Advance Cu.....	32
Zintake.....	33
Foliar Advance Zn.....	34
Fortis.....	35
CalMax Complete.....	36
PK Bulk/Uptake Mg.....	37

BIOLOGICALS

AgriFlora Soil.....	39
AgriFlora Foliar.....	40

PLANT GROWTH REGULATORS

StimPro.....	42
StimPro-K.....	43
Cytokelp.....	44
GA3.....	45
StimPro JA.....	46
StimPro SA.....	47
Chitosan.....	48
Tria.....	49
StimPro BR.....	50

SPECIALTY PRODUCTS

Organomex.....	52
Dry Solubles.....	53
pHix.....	54
SopHtner95.....	55
Opal.....	56
StimPro Armour/SW7.....	57
Yucca.....	58
SurfAct/Organol.....	59
Other Specialty Products.....	60

RESOURCES

Mixing Order of OMEX®.....	
Products & Pesticides.....	61
Compatibility Charts.....	62

Product Analysis and Descriptions

PRODUCT	ANALYSIS	DESCRIPTION
PRIMERS:		
Primer Cu®	0-22-3 with 3.4% Zinc & 3.4% Copper	*Phosphorus, Potassium, Zinc and Copper based product *Used as a nutrient seed dressing on cereals (wheat, barley, oats)
Primer Mn®	0-27-6 with 3.8% Zinc & 1.5% Manganese	*Phosphorus, Potassium, Zinc and Manganese based product *Used as a nutrient seed dressing on cereals and oilseed crops
Primer Zn®	0-22-3 with 6.7% Zinc	*Phosphorus, Potassium and Zinc based product *Used as a nutrient seed dressing on cereals and oilseed crops
Pulse Primer®/ Pulse Pak™/ Primer Soybean®	10% Calcium	*Rhizobium-friendly and 100% safe to use with all pulse crops *Calcium-based
Primer Canola®	0-22-3 with canola essential micronutrients	*A balanced formulation with Phosphorus, Potassium and a series of micronutrients that are essential for the early season growth and development of canola
STARTERS:		
Starter P®	9-32-2	*A superior source of Phosphorus and has a very low salt index, making it root friendly and selectively available to the emerging plant roots *Offers better control of the early "tie-up" of Phosphorus
Perfuze™	35% Mg; 50% Zn; 15% B; 50% Cu; 12.5% B+22% Zn; 25% Mn ; 20% Fe; 25% Zn + 10% B + 16% Mn	*Highly concentrated liquid suspension intended for coating dry PKS blends with micronutrients
TPA®	5-15-5	*Biodegradable beta protein, crystal inhibitor, prevents Phosphorus from being tied up *Nutrient absorption enhancer which allows for higher nutrient uptake by plant
Single Elements: OMEX Cu®, OMEX Fe®, OMEX Mn®, OMEX Zn®, OMEX Molybdenum®, FeRRoGREEN™ ED-DHA-Fe 3%	Copper EDTA 7.5%, Zinc EDTA 9%, Manganese EDTA 5%, Iron EDTA 5%, Molybdenum EDTA 1.5% or 3%, Dry Moly (47.5%), FeRRoGREEN™ ED-DHA-Fe 3%	*Fully water soluble solution of single elements (Zn, Cu, Mn, Fe, Mo, ...) to prevent and correct nutrient deficiencies
MicroCharger™	3% Zinc, 2% Manganese, 1% Copper, 0.5% Iron	*A supplementary source of micronutrients to continuously stimulate and protect the growth and development of the crop.
OrganoHume™	0-0-12 with 12% Humic acid	*Improves soil condition, CEC and nutrient uptake.
FOLIARS:		
C3®	6-12-6	*Low salt index fertilizers *Early season stress relief
C3®+Cu	6-12-6 with 0.5% Copper	
C3®+K	6-12-12	
P3™	5% Calcium	*Helps overcome environmental stresses and enhance vigour *Early season in-crop spray
Nutri-Boost®	6-17-5 + TEs	*A custom designed formulation to help growers manage stress conditions with a well-balanced nutrient program
uPtaKe IC®	5-25-5 + TEs	*Custom formulated, low salt index foliar macro fertilizer designed to complement a well-balanced nutritional program
	13-7-4 + TEs	
	8-32-5 + TEs	
SuperMn+	10-10-4 with 6% Manganese	*High performance multi-nutrient enhanced product *Addresses both Manganese issues and uses this opportunity in the plants metabolic cycle to boost plant health and growth with addition of N, P, K, Mn and S
SuperB® KB78®	4-0-0 with 10% Boron 3-0-7 with 8% Boron	*Boron primarily regulates carbohydrate metabolism and sugar translocation in plants *Boron is essential for protein synthesis, seed and cell wall formation, germination of pollen grains and growth of pollen tubes
Foliar Advance Cu™	9-15-0 with 5% Copper	*A fully water-soluble Copper solution in a form readily available to plants *Most effective when applied as a foliar spray *Supplies a sufficient amount of Copper to correct deficiencies

PRODUCT	ANALYSIS	DESCRIPTION
FOLIARS CONTINUED:		
Foliar Advance Zn™	10-0-0 with 9% Zinc	*A fully water-soluble Zinc solution in a form readily available to plants *Most effective when applied as a foliar spray
Zintake™	0-26-4 with 9% Zinc	*Supplies a sufficient amount of Zinc to correct deficiencies *Helps increase Zinc density and proteins in the seed
Fortis™	3-0-1 with 4.5% S, 2% Cu, 2% Mn, 1.25% Zn, 0.25% B + TEs	*Low salt index liquid fertilizer with high levels of Copper, Manganese and Zinc *Provides enhanced uptake and translocation, while minimizing tissue damage *Improves lignification & straw strength *Helps prevent lodging
CalMax Complete®	10-0-3, 11% Ca + 0-28-19 + TEs	*A reacted Calcium formulation formulated with the AXM Technology™ that allows for a better uptake and translocation of Calcium. Very complete nutrient package
PK Bulk™	0-29-5 with 4% Magnesium	User friendly formula used to mitigate or correct Magnesium deficiencies
Uptake Mg™	11-0-0 with 4% Magnesium	
Thio-S56™	5-0-0-6% Sulfur	*Sulfur products for in-furrow and foliar application
Flowable Sulfur	51% Sulfur	
Foliar Supreme™	0-16-10 with 33% Sulfur	
K25™	0-0-25	*Potassium solutions formulated for fast foliar uptake and translocation.
Liquid K Xtra™	0-0-12	
SPECIALTY PRODUCTS:		
Dry Solubles	15-30-15 + TE; 15-15-30 + TE; 20-8-20 + TE; 20-20-20 + TE; 30-10-10; 13-0-46; 0-52-34	*Fully soluble and highly plant-available source of essential nutrients designed with an extensive range of NPK ratios providing optimum feed for various stages of growth and development.
Surfact™	Wetting agent, 90% Tensioactive	*Spray aids, tension-active and drift reducing agents.
Organol™	Spraying aid, 90% Active Ingredient	
Opal®	Potassium Salts of Fatty Acids	*A contact insecticide that controls a variety of common garden and crop pests
Organomex™	6-2-4, 3-1-8 + Secondary + Trace Elements ; 0-0-4; 0-0-8	*Organically certified, non-GMO containing fertilizer suspensions with high analysis of NPKS, secondary nutrients (Ca, Mg) and micronutrients. Ideal for transplants, greenhouse or hydroponically-grown crops, as well as horticultural and field crops *Excellent source of Ca and K for soft fruits and vegetables
pHix®	Water conditioner/hardness/ pH adjuster	*Water conditioner that adjusts pH and reduces hardness, preventing the tie-up of phosphate-based pesticides. It improves spray water quality to ensure optimum efficiency of herbicides such as Glyphosate. Use for burn-off and desiccation
SopHtner95™	Soil conditioner & water hardness adjuster	*A water softener and a pH reducer designed for soil and foliar applications, where the pH need to be lowered into a more acidic range. Excellent chelating agent *Use with in-crop sprays
SW7/Stim-Pro-Armour	0-8-0 with 62% Si 0-0-15 with 25% Si	*Wetter, spreader, sticker with silica. Stimulate plant defenses.
Yucca	50% extract of <i>Yucca Schidigera</i>	*Natural non-ionic surfactant.
BIOLOGICALS:		
Agriflora Soil	Rhizobacteria <i>Bacillus subtilis</i> 2x10 ⁹ . CFU/g & <i>B. amyloliquefasciens</i> 2x10 ⁹	*Microbial supplement designed to enhance plant growth and development, nutrients uptake, the overall health, yield and quality. For soil or seed application.
Agriflora Foliar	Rhizobacteria <i>Bacillus subtilis</i> 2x10 ⁹ . CFU/g & <i>B. amyloliquefasciens</i> 2x10 ⁹	Microbial supplement for foliar application.
PGRS:		
Chitosan	4% Chitosan	*Naturally found in crustacean shells and fungal cell walls, stimulate growth.
Cytokelp	0.17-0-0.24 + 0.13% Ca, 0.08%Mg with 0.25% Kinetin, 6% Kelp extract, 5% Yucca extract	*PGR with Kinetin, Kelp and Yucca extract.
StimPro	3-IBA 0.85%, Kinetin 0.15%	*PGR with Auxins and Cytokinins.
StimPro BR	2,4 Epibrassinolide 0.01%	*PGR with BR to stimulate growth and development.
StimPro-GA3	5% GA3	*PGR with GA3 to break dormancy and stimulate growth and development.
StimPro-JA	0.025% JA	*PGR with Jasmonic acid to trigger defenses towards diseases and pests.
StimPro-K	0.9% Kinetin, 0.3% SA, 0.3% Vit B1 & C	*PGR with Cytokinins to stimulate cell division and reduce stress.
StimPro-SA	0-0-4.6 with 10% SA	*PGR with Salicylic acid to trigger defenses towards diseases.
Tria	0.5% Tricontanol	*Naturally occurring biostimulant.

Application Rates by Crop

CROP	APPLICATION	PRODUCT	TIMING	RATE
CEREALS: WHEAT OATS BARLEY CORN	Seed dressing	Primer (Zn/Cu/Mn) [®]	Seed dressing/coating	3 mL/Kg of seed; 122 bu per 10 L jug; 410 L per 5000 bushel bin. For corn use 9-12 ml/Kg.
	Starter fertilizer	Starter P [®]	Seed placed (in-furrow)	3-5 US gal/ac
		Perfuze [™]	Dry fertilizer coating	0.5-5 L/metric ton of blend.
		TPA [®]	Seed placed (in-furrow)	0.25-0.5 L/ac
	Foliar application	C3 [®]	Herbicide: 3-5 leaf stage; after hail	1 L/ac
		Foliar Advance Cu [™]	Herbicide/Fungicide	0.5-1 L/ac
		Nutri-Boost [®]	Herbicide: 3-5 leaf stage; after hail	2 L/ac
		uPtaKe IC [®]	Various stages/Fungicide	2-3 L/ac
		Zintake [™] /Foliar Advance Zn [™] / Omex Zn	Various stages; especially soft dough. Use Omex Zn with herbicide on corn	1-2 L/ac
		PK Bulk [™] /Uptake Mg [™]	Various stages; Correct Mg deficiency	1-2 L/ac
		Fortis [™]	Flag leaf	1 L/ac
		Liquid K Xtra [™] w/ PGRs	Herbicide: 3-5 leaf stage	2 L Liquid K w/ 75 mL PGRs/ac
pH/hardness adjuster	SopHtner95 [™]	For any in-crop spray (soften the water)	1L/100 US gal of water	
	pHix [®]	Glyphosate pre-burn/dessication	0.5 L/ 100 US gal of water	
OILSEEDS: CANOLA MUSTARD FLAX SOYBEANS SUNFLOWERS	Seed dressing	Primer Canola [®]	Seed dressing/coating	6 mL/Kg of seed or 73 x 50 lbs bags per 10 L jug
		Primer Soybean [®]	Seed dressing/coating	1 mL/Kg of seed or 367 bu per 10 L jug
	Starter fertilizer	Starter P [®]	Seed placed (in-furrow)	3-5 US gal/ac
		Perfuze [™]	Seed placed (in-furrow)	0.5-5 L/metric ton of blend.
		TPA [®]	Seed placed (in-furrow)	0.25-0.5 L/ac
	Foliar application	C3 [®]	Herbicide: 1-4 leaf stage (1st spray); after hail	1 L/ac
		Nutri-Boost [®]	Herbicide: 1-4 leaf stage (1st spray); after hail	2 L/ac
		SuperMn+	Herbicide: 2nd spray	1-2 L/ac
		SuperB [®] /KB78 [®]	Early bolting & with Fungicide; after hail	0.5-1 L/ac
		uPtaKe IC [®]	Various stages	2-3 L/ac
		Zintake [™] / Foliar Advance Zn [™]	Fungicide	1-2 L/ac
		PK Bulk [™] /Uptake Mg [™]	Various stages; Correct Mg deficiency	1-2 L/ac
pH/hardness adjuster	SopHtner95 [™]	For any in-crop spray (soften the water)	1L/100 US gal of water	
	pHix [®]	Glyphosate pre-burn/ Harvest Aid	0.5 L/ 100 US gal of water	
PULSES & ALL: PEAS LENTILS CHICKPEAS FABA BEANS DRY BEANS ALFALFA	Seed dressing	Pulse Primer [®] / Pulse Pak [™]	Seed dressing/coating	3 mL/Kg of seed; 122 bu per 10 L jug; 410 L per 5000 bushel bin
	Starter fertilizer	Starter P [®]	Seed placed (in-furrow)	3-5 US gal/ac
		Perfuze [™]	Seed placed (in-furrow)	0.5-5 L/metric ton of blend.
		TPA [®]	Seed placed (in-furrow)	0.25-0.5 L/ac
	Foliar application	P3 [™] /Zintake [™] + SR	Herbicide; after hail	P3 [™] : 0.25 L/ac; Zintake [™] : 1-2 L/ac
		SuperB [®] / KB78 [®]	Early bolting & with Fungicide; after hail	0.5-1 L/ac
		uPtaKe IC [®]	Various stages	2-3 L/ac
		PK Bulk [™] /Uptake Mg [™]	Various stages; Correct Mg deficiency	1-2 L/ac
		Zintake [™] / Foliar Advance Zn [™]	Various stages	1-2 L/ac
	pH/hardness adjuster	SopHtner95 [™]	For any in-crop spray (soften the water)	1L/100 US gal of water
pHix [®]		Glyphosate pre-burn/dessication	0.5 L/ 100 US gal of water	

PRIMERS



With the intensive farming and stress conditions encountered every season, all harvested seed suffers from an unbalanced nutrient density to guarantee a maximum germination and vigor. Applying key nutrients onto the seed as Primers[®] or seed dressings helps to balance the nutrients' density and guarantee an even emergence and an optimal seedling growth and development up to the 3-5 leaf stage.

OMEX PRIMERS[®] add nutrients onto the seed, optimizing the balance between macro- and micronutrients to maximize seedling emergence and vigor. PRIMERS[®] help the plant cope with early-season cold and wet conditions to get the crop off to a strong start and be more competitive with the weeds.





Promoting Faster Emergence & Root Development

ANALYSIS (0-22-3 WITH 6.7% Zn)

Application Guidelines



WHAT IS IT?

- > Seed dressing for application onto cereals and oilseed prior to seeding.
- > Unique formulation with high concentrations of Phosphorus, Potassium and Zinc.
- > The Gel Rheology Technology™ keeps the highly concentrated product suspended and helps with seed adhesion and drying out.

WHEN & WHY USE IT?

- > To reduce the effect of cold and wet conditions and when seeding into a dry soil.
- > If seeding into high pH soils, heavy manure land, soils with high organic matter.
- > To provide nutrients lacking in sandy and light-textured soils.
- > Western Canadian soils are Zinc deficient and the harvested grains from these soils are low on Zinc.
- > Zinc is required for energy production and protein synthesis.
- > Phosphorus and Zinc are key drivers for an optimum germination and vigor.
- > Zinc aids in the prevention of maturity delays.

WHAT TO EXPECT?

- > Quick emergence and establishment of the seedlings.
- > Good root development and biomass.
- > Advanced days to maturity.

Cereals: 3 mL/Kg of seed; 122 bu per 10 L jug; 410 L per 5000 bushel bin.

Oilseeds: 6 mL/Kg of seed or 73 x 50 lbs bags per 10 L jug.

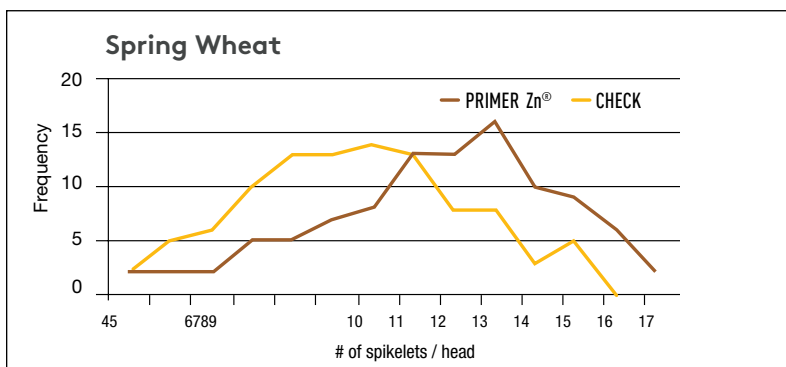
Primer Zn® should not be used with liquid inoculant on pulses.

Primer Zn® can be applied onto the seed in combination with other seed treatments. Check the best option for your targeted combination (see compatibility charts).

If required, Primer Zn® can be diluted with water for a more uniform coverage onto the seed. It is highly recommended to wash the seed treatment equipment after using the product.

The product is available in 10 L jugs, 450 L and 1000 L IBC's.

*Primer Zn® is a registered trademark of OMEX Agriculture Inc.



866-860-9660 / orders@omexcanada.com

Primer^{Cu}

Ultimate Copper Seed Nutrition

ANALYSIS (0-22-3 WITH 3.4% Zn & 3.4% Cu)

WHAT IS IT?

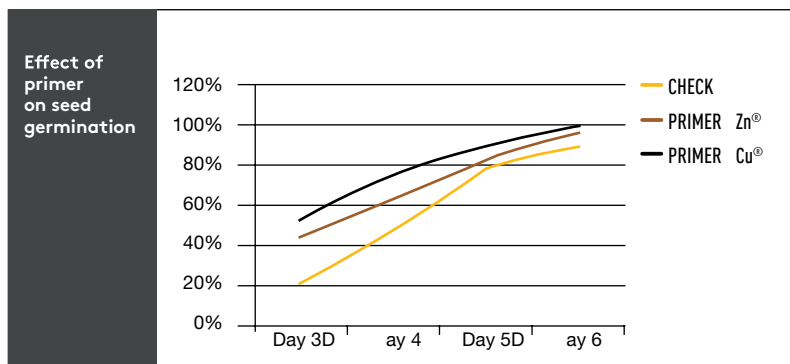
- > Seed dressing for application onto cereals seed prior to seeding.
- > Unique formulation with high concentrations of Phosphorus, Potassium, Zinc and Copper.
- > The Gel Rheology Technology™ keeps the highly concentrated product suspended and helps with seed adhesion and drying out.

WHEN & WHY USE IT?

- > In areas where Copper deficiency ('pig tailing', ergot, lodging) is prevalent.
- > To prevent the effect of cold, wet conditions and when seeding into a dry soil.
- > If seeding into high pH soils; soils with high N levels; sandy and light-textured soils.

WHAT TO EXPECT?

- > Contributes to stronger roots and stems.
- > Maximizes Copper uptake early in the growing season as Copper is placed in close proximity to the growing root tips.
- > Helps prevent deficiency symptoms ('pig tailing', lodging and exposure of ergot).
- > Corrects deficiency, preserves yield and prevents maturity delays.



Check



Primer Cu[®]



Application Guidelines



Cereals: 3 mL/Kg of seed or 122 bu per 10 L jug; 410 L per 5000 bushel bin.

Primer Cu[®] is NOT recommended on pulses, especially with liquid inoculant.

Primer Cu[®] can be used alone or in combination with other seed treatments. Check the best option for your targeted combination (see compatibility charts).

Primer Cu[®] can be diluted with water for more uniform coverage onto the seed. Dilution improves the dry down time.

Primer Cu[®] requires the use of high grade steel equipment and plumbing.

It is highly recommended to wash the seed treatment equipment with water after use.

The product is available in 10 L jugs, 450 L and 1000 L IBC's.

*Primer Cu[®] is a registered trademark of OMEX Agriculture Inc.

OMEX[®]

866-860-9660 /
orders@omexcanada.com



Promotes Roots... Triggers Crop Defenses

ANALYSIS (0-27-6 WITH 3.8% Zn & 1.5% Mn)

WHAT IS IT?

- > Seed dressing for application onto cereals, oilseed and pulses prior to seeding.
- > Unique formulation with high concentrations of Phosphorus, Potassium, Zinc and Manganese.
- > The Gel Rheology Technology™ keeps the highly concentrated product suspended and helps with seed adhesion and drying out.

WHEN & WHY USE IT?

- > To help reduce the effect if cold and wet conditions and when seeding into a dry soil.
- > When seeding into high pH soils, heavy manure land, soils with low organic matter.
- > When farming sandy and light-textured soils.

WHAT TO EXPECT?

- > Enhanced secondary root development which maximizes the uptake of all nutrients.
- > Primer Mn® triggers the crop's natural defenses (i.e. Phytoalexins), which in conjunction with the fungicide seed treatment:
 - >improves the quality and grade of the grains;
 - >preserves yield.



Application Guidelines



Cereals: 3 mL/Kg of seed or 122 bu per 10 L jug; 410 L per 5000 bushel bin.

Oilseeds: 6 mL/Kg of seed or 73 x 50 lbs bags per 10 L jug.

Primer Mn® can be used alone or in combination with other seed treatments. Check the best option for your targeted combinations (see compatibility charts).

Primer Mn® can be diluted with water for a more uniform coverage onto the seed. Dilution improves the dry down time.

Primer Mn® should NOT be used with liquid inoculant on pulses. It is highly recommended to wash the seed treatment equipment with water after use.

The product is available in 10 L jugs, 450 L and 1000 L IBC's.

*Primer Mn® is a registered trademark of OMEX Agriculture Inc.



866-860-9660 /
orders@omexcanada.com

Pulse Primer[®]

The Trigger for Root Growth & Nodulation

ANALYSIS (10% Ca)

WHAT IS IT?

- > Seed dressing for application onto pulse seed (peas, lentils, chickpeas, ...).
- > Calcium-based seed dressing.
- > Rhizobia-friendly formulation.
- > The Gel Rheology Technology™ keeps the highly concentrated product suspended and helps with seed adhesion and drying out.

WHEN & WHY USE IT?

- > When seeding into wet and cold conditions or when the top soil is dry.
- > If seeding into low pH soils, heavy manure land, soils with high Nitrogen levels.
- > If farming sandy and light-textured soils.
- > When seeding into heavy textured soil with high Mg content.

WHAT TO EXPECT?

- > Early emergence and a better stand.
- > Extensive root growth.
- > Better nodulation.
- > Better Nitrogen use efficiency and preservation of yield.



Application Guidelines



Pulse crops: 3 mL/Kg of seed.

Pulse Primer[®] can be used alone or in combination with seed treatments, dry and liquid inoculants. Check the best option for your targeted combination (see compatibility charts).

Pulse Primer[®] can be diluted with water for a more uniform coverage onto the seed.

The product is available in 10 L jugs, 450 L and 1000 L IBC's.

*Pulse Primer[®] is a registered trademark of OMEX Agriculture Inc.

PRIMERS

OMEX[®]

866-860-9660 /
orders@omexcanada.com



Promotes Roots & Nodulation... Triggers Natural Defenses

ANALYSIS (0-27-6 WITH 3.8% Zn & 1.5% Mn + 10% Ca)

WHAT IS IT?

- > Seed dressing for application onto pulse seed (peas, lentils, chickpeas, ...).
- > Calcium-based seed dressing.
- > Rhizobia-friendly formulation.
- > The Gel Rheology Technology™ keeps the highly concentrated product suspended and helps with seed adhesion and drying out.

WHEN & WHY USE IT?

- > When seeding into wet and cold conditions or when the top soil is dry.
- > If seeding pulses into low pH soils, heavy manured land or soils with high Nitrogen levels.
- > If farming sandy and light-textured soils.
- > Most importantly when farming land challenging with soil-borne/seed-borne diseases that thrive under wet conditions.

WHAT TO EXPECT?

- > Pulse Pak™ enhances secondary root development, which maximizes the uptake of all nutrients.
- > Pulse Pak™ triggers the crop's natural defenses (i.e., Phytoalexins), which in conjunction with the fungicide seed treatment:
- > improves the control of soil- and seed-borne diseases;
- > prevents root rots and damping-off;
- > improves crop emergence and establishment;
- > and helps preserve yield.
- > Better Nitrogen use efficiency and preservation of yield.



Application Guidelines



Pulse crops: 3 mL (1.5ml Pulse Primer + 1.5ml Primer Mn)/Kg of seed or 122 per 10 L jug; 410 L per 5000 bushel bin.

Pulse Primer™ can be used alone or in combination with seed treatments, dry and liquid inoculants. Check the best option for your targeted combination (see compatibility charts).

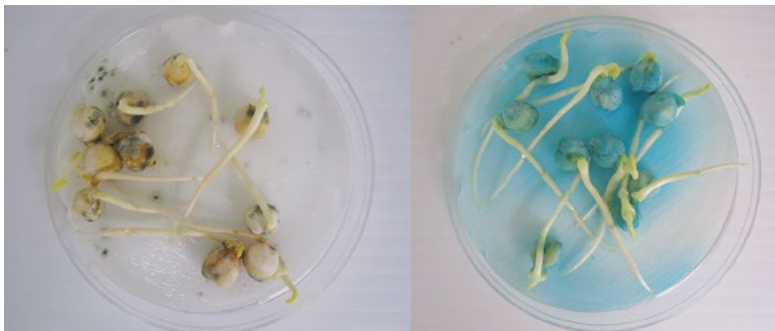
Pulse Pak™ can be diluted with water for a more uniform coverage onto the seed. Dilution improves the dry down time.

Pulse Pak™ can be used with liquid or dry granular inoculant.

It is highly recommended to wash the seed treatment equipment with water after use.

The product is available in cases 2 x 10 L jugs (1 jug of Pulse Primer (Part A) and 1 jug of Primer Mn (Part B)).

*Pulse Primer® is a registered trademark of OMEX Agriculture Inc.



UTC chickpeas versus treated with a combination of fungicide seed treatment and Pulse Pak

866-860-9660 /
orders@omexcanada.com

Canola Primer[®]

Balanced Nutrition for Germinating Canola

ANALYSIS (0-22-3 WITH CANOLA ESSENTIAL MICRONUTRIENTS)

WHAT IS IT?

- > Seed dressing for application onto canola and mustard seed prior to seeding.
- > Unique formulation with high concentrations of Phosphorus, Potassium and Zinc as well as other essential micronutrients.
- > The Gel Rheology Technology™ keeps the highly concentrated product suspended and helps with seed adhesion and drying out.

WHEN & WHY USE IT?

- > To improve early-season establishment of canola in cold and wet soil conditions.
- > To provide readily available Phosphorus, Potassium, Zinc and other micronutrients that are limited by the cold and wet conditions
- > To trigger earlier emergence allows canola seedlings to outcompete weeds.

WHAT TO EXPECT?

- > Reduced risk of a poor stand and the need to re-seed.
- > Canola cabbages out and bolts quicker, resulting in an earlier flowering to beat the summer heat.
- > Advanced maturity, earlier dry down and better management of the harvest operation.

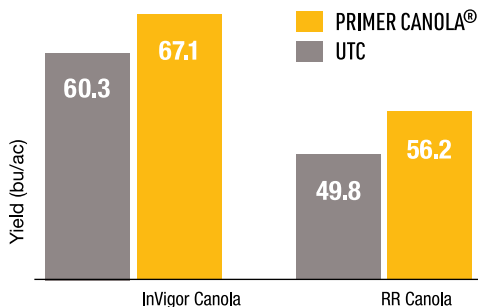
Early-season difference in growth and development between Primer Canola[®] treated and untreated seeds.



Check

Primer Canola

Yield advantage in LL and RR canola treated with Primer Canola[®] vs an untreated check (Manitoba, 2014).



Application Guidelines



Canola: 6 mL/Kg of seed or 73 x 50 lbs bags per 10 L jug.

Primer Canola[®] can be used alone or in combination with other pesticides or biological seed treatments.

Primer Canola[®] can be diluted with water for a more uniform coverage onto the seed.

When diluted with water the dry down is faster.

It is highly recommended to wash the seed treatment equipment with water after using the product.

The product is available in cases of 2 x 10 L jugs, 450 L and 1000 L IBC's.

*Primer Canola[®] is a registered trademark of OMEX Agriculture Inc.



866-860-9660 /
orders@omexcanada.com

PRIMERS

Soybean Primer®

PRIMERS

Earlier Seeding... Better Root System... Hastened Maturity

ANALYSIS (10% Ca WITH SOYBEANS ESSENTIAL MICRONUTRIENTS)

WHAT IS IT?

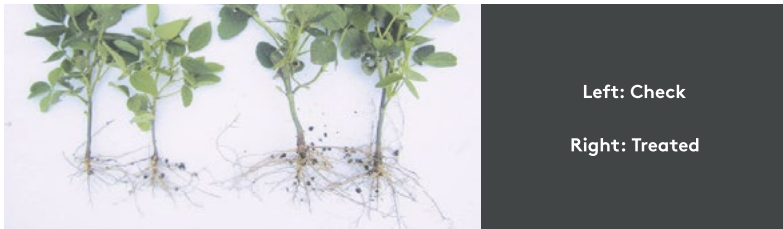
- > Seed dressing for application onto soybeans seed prior to seeding.
- > Unique formulation with high concentrations of calcium.
- > The Gel Rheology Technology™ keeps the highly concentrated product suspended and helps with seed adhesion and drying out.
- > It is Rhizobium-friendly and safe to use with all commercially available liquid and dry inoculants in Canada.
- > Low inclusion rate. (1ml/kg of seed)

WHEN & WHY USE IT?

- > To reduce the impact of cold, wet conditions or when seeding into dry top soil.
- > When seeding into heavy manured land.
- > If planting soybeans into light-textured soils or high Magnesium soils.
- > If seeding into a soil with a history of high Nitrogen application.

WHAT TO EXPECT?

- > Better root growth and early-season establishment.
- > Early seed emergence.
- > Better nodulation.
- > Hastened maturity.



Application Guidelines



Apply Primer Soybean® at 1 ml/kg of seed at or prior to planting.

If required, Primer Soybean® can be diluted with water for a more uniform distribution onto the seed.

Primers can be used alone or in combination with inoculants and seed treatments. Check the best option for your targeted combinations (see compatibility charts).

The product is available in 10 L jugs, 450 L and 1000 L IBC's.

*Primer Soybean® is a registered trademark of OMEX Agriculture Inc.

OMEX®

866-860-9660 /
orders@omexcanada.com

STARTERS



OMEX STARTERS® are in-furrow applied fertilizer strategically placed to provide readily available phosphorus for maximum uptake into the plant. This immediate access to phosphorus enhances rapid root growth and nutrient uptake, leading to an accelerated emergence of the seedlings. This well and timely placed, seed-friendly fertilizer supports early plant establishment and acts as a complement to a balanced fertility program.



Starter P[®]



Maximizing Phosphorus Use Efficiency

ANALYSIS (9-32-2 WITH THE STARTER TECHNOLOGY™)

Application Guidelines



STARTERS

WHAT IS IT?

- > Starter fertilizer for in-furrow.
- > High Phosphorus content with the Starter Technology.
- > Formulated with 70% Ortho- (readily available form) and 30% Polyphosphate (converts slowly as soil warms up).
- > Low salt index.
- > No chloride.
- > Seed safe.

WHEN & WHY USE IT?

- > When seeding into cold and wet conditions.
- > In soils with high levels of Ca^{2+} , Fe^{3+} or Al^{3+} .
- > Use to improve early-season availability and uptake of Phosphorus.
- > Use to reduce phosphorus tie-up by Ca^{2+} , Fe^{3+} or Al^{3+} .
- > Use to supplement a well-balanced soil fertility program.

WHAT TO EXPECT?

- > Improved root and shoot development and crop establishment.
- > Strong advantage of the crop over the weeds.
- > Enhanced tolerance to early season environmental stress.
- > Less signs of phosphorus deficiency on the seedlings (purpling).

3-5 US gal/ac in-furrow

Can be combined with other fertilizer mixes (i.e., UAN, ATS, KTS, KOH, ...).

Starter P[®] can be used with OMEX[®] ED-TA-chelated micronutrients as required.

Starter P[®] can be used with AgriFlora Soil to enhance soil and crop health.

Starter P[®] can be used with Sunalta B, OrganoHume, MicroCharger™, K25, Sequestri CAL, as well as other biostimulants and PGR's as required.

Do not mix with available calcium (ie Liquid Cal, CN9)

Always recommended to use with a complete spring-applied fertilizer program.

At 1-2 leaf stage



Check



Starter P

At cabbage stage



Check



Starter P

The product is available in bulk (32,000 L +) and 1000 L IBC's.

*Starter P[®] is a registered trademark of OMEX Agriculture Inc.

OMEX[®]

866-860-9660 /
orders@omexcanada.com



Nutrient Uptake Efficiency Enhancer

ANALYSIS (5-15-5)

WHAT IS IT?

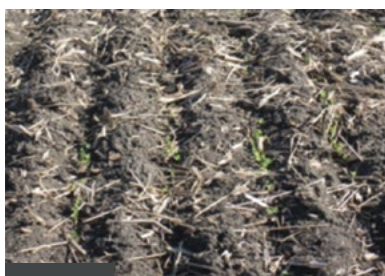
- > TPA[®] stands for Thermo Poly Aspartate.
- > Highly polymerized and negatively charged beta protein.
- > Biodegradable and lasts 120 days in the soil.

WHEN & WHY USE IT?

- > Used in starter fertilizer to reduce the binding of phosphorus with Ca²⁺, Fe³⁺ or Al³⁺.
- > Applied in alkaline soils with high content of Ca²⁺ and in acidic soil with high levels of Fe³⁺ or Al³⁺.
- > By reducing the tie-up, TPA[®] increases nutrient availability.

WHAT TO EXPECT?

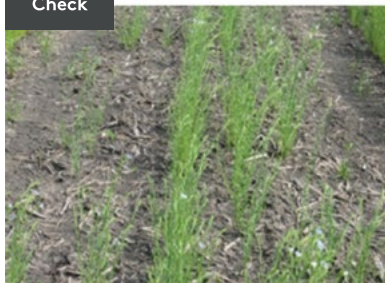
- > Improved root development and growth.
- > Better nutrient availability and uptake visible in tissue tests.
- > Increased tuber count in potatoes with an even
- > Improved marketable yield in potatoes.



Check



TPA[®]



In heavy clay soil



Check



10-34-0



10-34-0 + TPA[®]



Application Guidelines



Apply 1-2 L/ac of TPA[®] with in-furrow applied liquid fertilizer.

TPA[®] can be injected into the irrigation water (micro jet or drip).

TPA[®] may be used to reduce corrosion in liquid fertilizer tanks.

It can be applied in combination with a foliar fertilizer program.

STARTERS

The product is available in 10 L jugs, 450 L and 1000 L IBC's.

Also available with PGRs.

*TPA[®] is a registered trademark of OMEX Agriculture Inc.



866-860-9660 /
orders@omexcanada.com

OrganoHume™

Improved soil condition, CEC and nutrients uptake

ANALYSIS: 0-0-12 w/12% HUMIC ACID



Application Guidelines



STARTERS

WHAT IS IT?

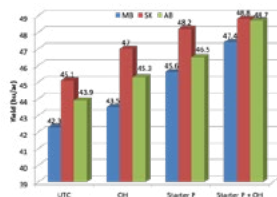
- > OrganoHume is a liquid formulation made from a naturally occurring type of oxidized coal that is very rich in humified organic matter, humic and fulvic acids, with minimal impurities.
- > OrganoHume is generally combined with existing soil applied liquid or granular starter fertilizers formulations to improve soil conditions, the Cation Exchange Capacity (CEC) of the soil, phosphorus uptake and the overall health of the plants.
- > OrganoHume contains humates (humic and fulvic acids) and may be used as a soil amendment, foliar spray or fertilizer enhancer to maximize nutrients uptake.
- > It provides a good source of potassium to complement a well-balanced fertility program.

WHEN & WHY USE IT?

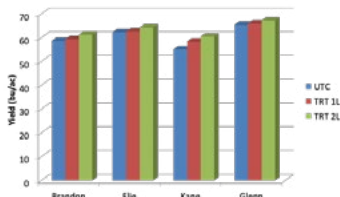
- > OrganoHume is recommended on weathered soils; sandy or other light-textured soils with a low CEC; soils with a heavy texture and infiltration challenges; soils exhibiting salinity issues and on soils with poor microbial activity.
- > Humates increase the soil water-holding capacity and infiltration. This greatly improves the soil, and increases plant root growth and metabolism, enhancing seed germination and helping plants cope with environmental stresses.
- > Being large molecules and negatively charged, humates improved soil's ability to hold and exchange nutrients with the plants, resulting in an improved nutrient status of the crop.
- > OrganoHume balances the C:N ratio of the soil resulting in an improved microbial activity.
- > In soils with salinity or sodicity issues, OrganoHume can be an integral component to help displace sodium and improve availability of calcium and potassium.

WHAT TO EXPECT?

- > A promotion of plant growth and root development, which results in an improved plant health and production.
- > Higher microbial activity aids in the mineralization process and maintenance of the overall soil health.
- > OrganoHume acts as a natural chelating agent, binding and exchanging nutrients with the roots hence preventing tie-up and leaching.
- > Being able to better access water resources and nutrients crops treated with OrganoHume will exhibit strength and resilience to biotic and abiotic stresses.



Canola yield (LL 5440) in 3 sites across the Prairies in response to OrganoHume used alone or in combination with Starter P



Yield response of 4 varieties of wheat treated with various rates of OrganoHume with the Starter P fertilizer

May vary depending on your soil condition. Please check with your agronomist, independent crop retail or one of our OMEX Plant Health Professionals. Below an indication about some uses:

Seed and Potato Seed-piece Treatment: Apply 2-3 Liters of OrganoHume diluted in 100 liters of water as a seed treatment dip or spray.

For transplant: Apply 1 Liter of OrganoHume diluted in 100 liters of water.

In-Furrow: Apply 2-5 Liters of OrganoHume per acre diluted in 100 liters of water. Use alongside banded or broadcasted fertilizer mixture.

Mixing Directions

OrganoHume is compatible with liquid fertilizers and micronutrients used as a starter or a foliar as well as many pesticides. A jar test is recommended for any new mixture not tested previously. Always follow directions on the pesticide label and do not mix with carbonate-based pesticides or Glyphosate as weed efficacy may be decreased.

The product is available in 10 L jugs, 450 L and 1000 L IBC's and bulk (34,000L+).

*OrganoHume® is a registered trademark of OMEX Agriculture Inc.



866-860-9660 /
orders@omexcanada.com



Chelated Micronutrients The Essential Chelates

(9% Zn; 7.5% Cu; 5%Mn; 4.5%Fe)

WHAT IS IT?

- > Fully soluble and chelated micronutrients.
- > Long lasting due to their protected nature from the chelation process.
- > Fast acting in preventing or correcting deficiencies of micronutrients.
- > Not prone to tie-up, complexation or interaction when mixed with negatively charged nutrients such as phosphates, sulfates, nitrates or chlorides or other pesticide molecules.
- > Seed and plant safe even at higher dosage.

WHEN & WHY USE IT?

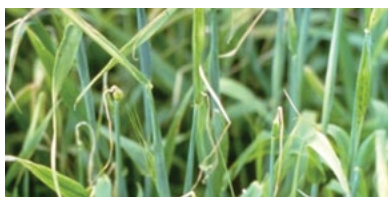
- > For use in-furrow with Starter fertilizer or in combination with top-dressed solutions.
- > Micronutrients availability in the soil is affected by the soil's make up (i.e., calcareous soils); soil's holding capacity (i.e., sandy soils), pH (i.e., high pH) and the level of organic matter (i.e., peat soils).
- > Micronutrients are not very mobile in the plant and cannot be mobilized fast from old to new tissues during peak demand.
- > Recommended on all crops and to all soils especially when micronutrient levels are low and/or where soils are light textured with a poor holding capacity; contain high levels of NPK or Mg; calcareous or heavily limed soils; with high organic matter; cold and wet; all of which are known to restrict micronutrients availability.
- > Chelated micronutrients can be applied alone or tank-mixed with fertilizers and pesticides in-furrow or using spray boom, drip systems, overhead irrigation or aircraft.

WHAT TO EXPECT?

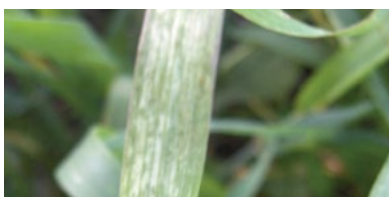
- > Prevention or correction of Zn, Cu, Mn or Fe deficiencies.
- > Increased micronutrient levels in the tissues (Zn, Cu, Mn, Fe).
- > Greening of the leaves as micronutrients are important for many processes including photosynthesis and the production of chlorophylls.
- > Promotion of plant health as these micronutrients have an adverse effect on pathogens and diseases.



ZINC DEFICIENCY



COPPER DEFICIENCY



MANGANESE DEFICIENCY



IRON DEFICIENCY

Type of deficiencies corrected by the addition of Omex Zn, Cu, Mn or Fe with Starter P.



Application Guidelines



In-furrow: 2-4 L/ac tank-mixed with a liquid starter fertilizer at seeding.

Foliar: 1-2 L/ac alone or mixed with other fertilizers or pesticides in a high water volume.

Fertigation: 1-2 L/ac (50-250ml per 1,000 sq. ft.) with the irrigation water every 7 to 14 throughout the growing season.

Can be combined with liquid fertilizers including phosphates or foliars as well as with a wide range of pesticides.

The product is available in 10 L jugs, 450 L and 1000 L IBC's.

*Omex Zn®, Omex Cu®, Omex Mn® and Omex Fe® are registered trademarks of OMEX Agriculture Inc.

STARTERS



866-860-9660 /
orders@omexcanada.com



The Iron Chlorosis Corrector

Application Guidelines



ANALYSIS (EDDHA-Fe 1.8%)

WHAT IS IT?

- > FeRRoGREEN™ is a liquid fertilizer formulated with 1.8% Fe in EDDHA form.
- > The EDDHA-chelated Orth-Ortho form of Iron is the most available form in-furrow in a variety of soil conditions.

WHEN & WHY USE IT?

- > FeRRoGREEN™ is recommended on a wide variety of field crops, ornamentals, turf, vegetables and fruit trees to mitigate or correct iron deficiency.
- > It is most effective when applied during the vegetative growth stage.
- > The best application is in-furrow but the product can also be applied by drip irrigation, drenching or side-dressing.
- > Soybeans interveinal Iron chlorosis is a nutrient deficiency that leads to the yellowing of the foliage and stunting of the plants.
- > It is a yield limiting factor in many areas where soils are calcareous with a limited availability of Iron.
- > The symptoms typically appear a few weeks after seedlings emergence as interveinal chlorosis on the first trifoliolate leaves. The leaves eventually turn yellow with dark green veins with necrotic edges that may progress to the center. The entire plant dies if the severity of the deficiency is high.
- > Due to the poor Iron translocation in plants, the new growth becomes more affected as the deficiency intensifies.
- > The symptoms tend to show up in irregularly shaped spots randomly distributed across a field.
- > Iron uptake is believed to occur through the root tip. However, recent findings have shown that the majority of usable Iron is absorbed through the root hairs.

WHAT TO EXPECT?

- > The usage of FeRRoGREEN™ in-furrow on soybeans, grown in area with low-, moderate- and high-iron chlorosis prevalence, prevented and/or corrected iron chlorosis and led to a prolonged "greenness" of the leaves.
- > The application of FeRRoGREEN™ in areas with calcareous and high pH soils, prone to develop iron deficiency, has shown a correction of the shortage and a prevention of yield loss.
- > Keeping the leaves green prevented a decrease in photosynthesis rate and carbohydrate translocation, hence preserving yield.



Iron Chlorosis in Canola that can be corrected by adding FeRRoGREEN into the starter.

FeRRoGREEN™ is compatible with commonly used pesticides and fertilizers and easily tank-mixed (Check compatibility charts).

The best application is in-furrow but the product can also be applied by drip irrigation, drenching or side-dressing.

FIELD CROPS: Such as soybeans, corn, sunflowers and alfalfa: apply 0.5-2.0 L/ac in-furrow or foliar.

VEGETABLES: Such as potatoes, tomatoes, peppers, melons, squash, carrots, celery, onions, beans, lettuce, spinach, cabbage, cauliflowers and other cucurbits: apply 1.0-4.0 L/ac at planting or during vegetative growth.

TREES: Apply 1-6 L/ac by drenching or drip-irrigation.

BERRY CROPS: Apply 1-4 L/ac (250-500ml per 1,000 row ft) in-furrow, by drenching, side-dressing or drip-irrigation.

VINEYARDS: Apply 1-8 L/ac. Ornamentals: Apply 60ml per 1,000 square feet or 60-120 ml per 1,000 row feet.

TURF: Apply 60-120 ml per 1,000 square feet every 5-6 weeks.

The product is available in 10 L jugs, 450 L and 1000 L IBC's.

*FeRRoGREEN™ is a trademark of OMEX Agriculture Inc.

OMEX®

866-860-9660 /
orders@omexcanada.com



Growing Plants will Never Run Out of Essential Micronutrients

ANALYSIS (0-3-3 WITH 3.0% Zn, 2.0% Mn, 1.0% Cu, 0.5 % Fe)

WHAT IS IT?

- > MicroCharger™ is a supplementary source of micronutrients including Zinc, Manganese, Copper and Iron.
- > For use at seeding or throughout the growing season.

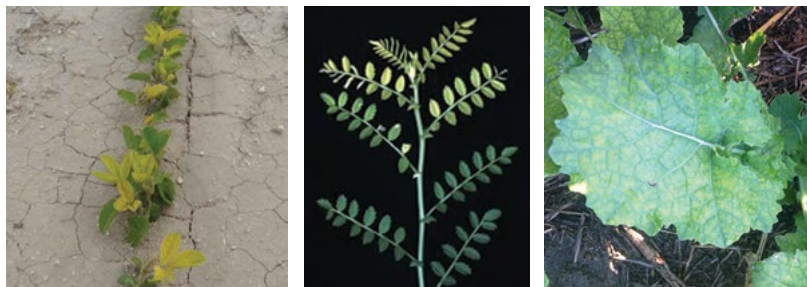
WHEN & WHY USE IT?

- > MicroCharger™ is used to protect plants and stimulate continuous development of the root system throughout the plant lifecycle.
- > MicroCharger™ should be used on the basis of a soil and/or tissue analysis on all types of soils and crops and through the foliage in a high volume of water to correct or prevent micronutrient deficiencies.

WHAT TO EXPECT?

- > More effective nutrient uptake compared to plants treated with a single element leading to less micronutrient deficiencies.
- > Helps preserve yield and prevent deficiencies.
- > Contribute in keeping the crop healthy.

Nutrient deficiencies that can be corrected using MicroCharger



- A- Zinc deficiency in corn
- B- Copper deficiency in wheat
- C- Manganese deficiency in wheat
- D- Iron chlorosis in Soy
- E- Manganese deficiency in Chickpeas
- F- Manganese deficient in canola
- G- Copper deficiency in wheat



Application Guidelines



Apply at 1 L/ac with in-furrow starter.

MicroCharger™ may be sprayed on as a foliar at 0.5-1L/ac.

MicroCharger™ may also be mixed with liquid foliar fertilizer at 0.5-1 L/ac.

Always perform a "jar test" to determine compatibility before mixing.

The product is available in 10 L jugs, 450 L and 1000 L IBC's.

*MicroCharger™ is a trademark of OMEX Agriculture Inc.

STARTERS



866-860-9660 /
orders@omexcanada.com



Better Distribution of Micronutrients in the Field

ANALYSES: PERFUZE Mg: 5-5-5 WITH 35% Mg / PERFUZE B: 5-5-5 WITH 15% B
 PERFUZE Zn: 5-5-5 WITH 50% Zn / PERFUZE Cu: 5-5-5 WITH 50% Cu PERFUZE
 BZn: 5-5-5 WITH 12.5% B + 22% Zn / PERFUZE Mn: 5-5-5 WITH 25% Mn
 PERFUZE ZnBMn: 5-5-5 WITH 25% Zn + 10% B + 16% Mn /
 PERFUZE Fe: 5-5-5 WITH 20% Fe



Application Guidelines



STARTERS

WHAT IS IT?

- > Highly concentrated liquid suspension intended for coating dry PKS blends with micronutrients.
- > It can also be applied on other porous materials placed in the seed row (i.e., gypsum/lime).
- > Formulated with Micronutrient Delivery System (MDS Technology™).
- > Various analyses offered.

WHEN & WHY USE IT?

- > Used to correct micronutrient deficiencies and address micronutrients crop demand based on a soil test and crop removal.
- > When soil-applied micronutrients are required.
- > Allows for a better distribution of micronutrients in the field.
- > In high pH soils, soils with high organic matter, heavy manured land, sandy and light textured soils and other situations restricting micronutrients availability.
- > Most cost-effective and efficient way of applying micronutrients to the soil.
- > Treatment possible at low temperatures (-25°C).

WHAT TO EXPECT?

- > Even coverage of the fertilizer granules.
- > Faster drying time.
- > As a liquid product, Perfuze™ helps reduce dust during blending.
- > Better access of the roots to essential micronutrients.
- > Correction of the expected micronutrients deficiencies.
- > Healthier crops with a preserved yield and quality.

Application rates of Perfuze™ vary depending on the crop, soil deficiency, crop removal, the NPKS blend and the broadcasting or banding application rate. The typical usage rate ranges from 0.5 L to 5 L per metric ton of blend.

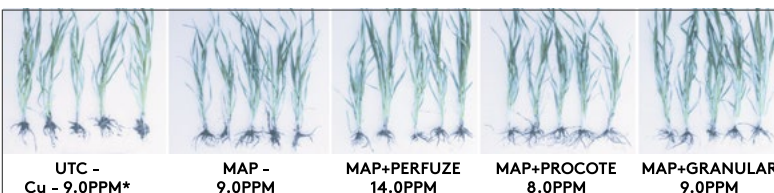
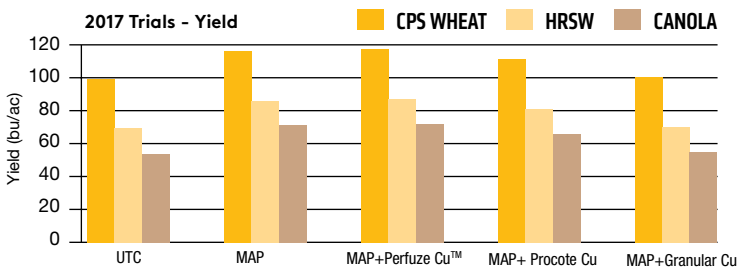
A calculator is provided to determine the optimal application rate.

The addition of diatomaceous earth is recommended for blends with a high percentage of urea to accelerate drying or improve storage conditions in the bin.

Perfuze™ is recommended for use in rotatory vertical or horizontal drum blenders, screw auger or conveyor blenders, rubon blender or other volumetric or declining weight blending systems.

The product is available in 5 L Pails, 450 L and 1000 L IBC's.

*Perfuze™ is a trademark of OMEX Agriculture Inc.



*Copper content in the tissues shown in ppm



866-860-9660 /
 orders@omexcanada.com



TPA Concentrate

38% a.i. (active ingredient)

ANALYSIS TPA 38% a.i.

WHAT IS IT?

- > TPA® Concentrate is a liquid additive intended to be used to impregnate dry Phosphorus (MAP, DAP, ...).
- > TPA® Concentrate enhances nutrient availability and maximizes Phosphorus use efficiency.
- > In addition, the negatively charged molecule reduces Phosphorus tie-up with Ca²⁺ (calcareous soils) or Fe²⁺/Al³⁺ (acidic soils).
- > TPA® Concentrate provides 10% of Potassium that triggers the release of additional Potassium from the clay layers and is biodegradable, preventing the accumulation of any residuals over time.
- > It has been formulated in a highly concentrated form to be applied at low volume on dry fertilizer, enhancing drying time and reducing chances for caking.
- > Once applied to the soil, the impregnated Phosphorus is protected in a readily available form for a period of 100-150 days, depending on the moisture and temperature conditions.

WHEN & WHY USE IT?

- > Apply TPA® Concentrate on fertilizer blend intended for alkaline soils with high content of Ca²⁺ or Mg²⁺ or acidic soils high in Fe³⁺ or Al³⁺.
- > The product is recommended on all crops including field, horticultural and vegetable crops as well as fruit trees, turf and ornamentals.

WHAT TO EXPECT?

- > Early season pop-up effect due to the improved phosphorus availability.
- > Prolonged availability of phosphorus with the prevention of tie-up.
- > Improved root development and growth.
- > Better nutrient availability and uptake is visible in tissue tests.
- > In tuber crops like potatoes, the additional availability of phosphorus could result in an increase in tuber count and an even size, which improves marketable yield.



Treatment of dry fertilizer blend with TPA Concentrate and the effect observed in the field on potatoes and cereals.



Application Guidelines



TPA® Concentrate is recommended at a rate of 3 L/metric ton of dry fertilizer.

The product is available in 10 L jugs, 450 L and 1000 L IBC's.

TPA™ is a trademark of OMEX Agriculture Inc.

STARTERS



866-860-9660 /
orders@omexcanada.com



ImPhos 50% Carboxylates

ANALYSIS: 50% Carboxylates



Application Guidelines



ImPhos® is recommended at a rate of 2-3 L/metric ton of dry fertilizer.

The product is available in 10 L jugs, 450 L and 1000 L IBC's.

ImPhos™ is a trademark of OMEX Agriculture Inc.

STARTERS

WHAT IS IT?

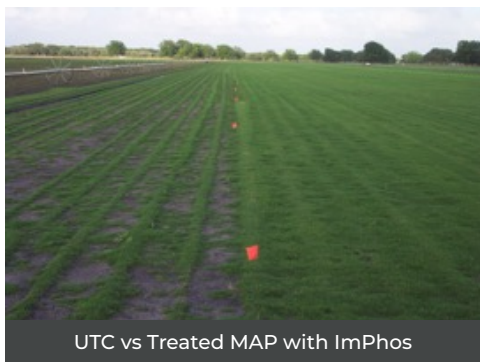
- > ImPhos® is a liquid additive intended to be used to impregnate dry Phosphorus (MAP, DAP, ...).
- > ImPhos® enhances nutrient availability and maximizes Phosphorus use efficiency.
- > In addition, the negatively charged molecule reduces Phosphorus tie-up with Ca^{2+} (calcareous soils) or Fe^{2+}/Al^{3+} (acidic soils).
- > ImPhos® is a liquid additive specifically formulated to impregnate dry Phosphorus (MAP, DAP, ...) in order to prevent its tie-up in both low and high pH soils.
- > It has been formulated in a highly concentrated form to be applied at low volume on dry fertilizer, enhancing drying time and reducing chances for caking.
- > Once applied to the soil, the impregnated Phosphorus is protected in a readily available form for a period of 100-150 days, depending on the moisture and temperature conditions.
- > ImPhos® is especially recommended for soils having issues with salinity.

WHEN & WHY USE IT?

- > Apply ImPhos® on fertilizer blend intended for alkaline soils with high content of Ca^{2+} or Mg^{2+} or acidic soils high in Fe^{3+} or Al^{3+} .
- > Apply ImPhos® especially of dealing soils having salinity issues.
- > The product is recommended on all crops including field, horticultural and vegetable crops as well as fruit trees, turf and ornamentals.

WHAT TO EXPECT?

- > Early season pop-up effect due to the improved phosphorus availability.
- > Prolonged availability of phosphorus with the prevention of tie-up.
- > Improved root development and growth.
- > Better nutrient availability and uptake is visible in tissue tests.
- > In tuber crops like potatoes, the additional availability of phosphorus could result in an increase in tuber count and an even size, which improves marketable yield.



UTC vs Treated MAP with ImPhos



866-860-9660 /
orders@omexcanada.com

FOLIARS



OMEX FOLIARS are liquid products formulated with specific nutrients and technologies to be applied with herbicides, fungicides and insecticides. FOLIARS boost crops metabolism during periods of biotic or abiotic stress to preserve yield potential. Sluggish crop growth can often appear around the 2-3 leaf stage when the seedling's limited root system cannot access the soil applied fertilizer. By applying foliar nutrition at this time, plants will have access to the crucial energy needed to stimulate root growth and quickly recover from early season stress. FOLIARS can also be used to quickly supply essential nutrients during peak demand to prevent or correct deficiencies when they occur.





The Stress Reliever

ANALYSIS (6-12-6 WITH THE STRESS RELIEVER TECHNOLOGY™)

Application Guidelines



WHAT IS IT?

- > C3® is a low salt index liquid fertilizer for in-crop spray.
- > Also available with high K analysis (C3®+K 6-12-12) and as C3® + 0.5% Cu.
- > Contains the Stress Reliever Technology™ (offsets energy re-allocation during stress periods).

WHEN & WHY USE IT?

- > Use with the herbicide at 3-5 leaf stage.
- > C3® boosts the metabolism, provides energy (high Phosphorus analysis) and relieves the crop from early-season stress (cold, wet, physical or chemical injury, ...).
- > C3® is compatible with most commonly used pesticides (see compatibility charts).
- > Use after hailstorm with SuperB® (10% Boron) to mitigate tissue damage and re-stimulate growth and branching.
- > Use to advance crop maturity.

WHAT TO EXPECT?

- > Improved root and shoot growth and development.
- > Stronger plants with an enhanced ability to cope with environmental stresses.
- > Re-bouncing from periods of stress (from yellowing to greener crop)
- > C3® preserves yield potential.
- > Less stalling and an advancement of crop maturity, hence an advantage in yield and quality.

Apply C3® at 1 L/ac with a minimum of 10 US gal/ac of water.

Can be used alone or in combination with pesticides (see compatibility charts).

Can be mixed with micronutrients (i.e., Zn, Cu, Mn, B).

Recommended for cereal crops at the 3-5 leaf stage, canola at the 1-4 leaf stage and peas at the 1-6 node stage.

Past these stages, check with your local OMEX® rep for other available products.

Tank-mix with 0.5 L/ac of Super B® on hail-damaged crops.

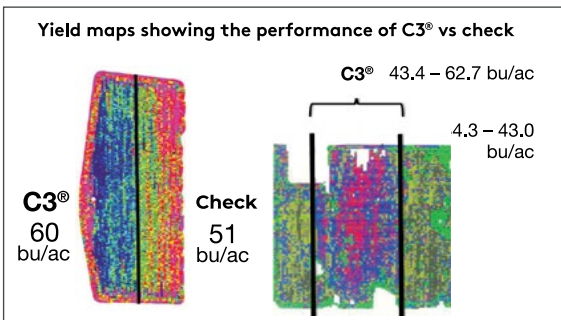
Add C3® last when tank mixing with Pesticides. If applied with Super B®, add Super B® last to the tank.

Do not premix concentrated C3 with concentrated Super B® in the same container. Always add product into water in the spray tank.

The product is available in 10 L, 450 L, 1000 L IBC's and bulk (32,000L+).

*C3® is a registered trademark of OMEX Agriculture Inc.

FOLIARS



Small plot trials since 2005 have shown a consistently positive response to C3®.

Field scale demonstration trials resulted in 8-13% (4-10 bu/acre) yield increases.



866-860-9660 /
orders@omexcanada.com



Advanced Calcium Nutrition

ANALYSIS (5% Ca WITH THE STRESS RELIEVER TECHNOLOGY™)

WHAT IS IT?

- > P3™ is a low salt index calcium-based liquid fertilizer.
- > P3™ is a foliar for in-crop spray.
- > It's formulated with the Stress Reliever Technology™ (offsets the energy re-allocation during stress periods).

WHEN & WHY USE IT?

- > Use at herbicide timing on all pulse crops (peas, chickpeas, lentils, faba beans, ...).
- > P3™ helps boost the metabolism and relieves the crop from early-season stress (cold, wet, physical or chemical injury, ...).
- > Use after hailstorm with Super B® (10% Boron) to mitigate tissue damage and re-stimulate growth and branching.
- > Use to advance crop maturity.
- > P3™ contains Calcium, which is important for cell division and elongation as well as cell wall development.
- > Calcium is important for nitrate uptake and metabolism and Phosphorus uptake.
- > Involved in the control of enzyme activity and starch metabolism.
- > Vital during the nodulation process in legumes.
- > Calcium is not very mobile in the soil or in plant tissue, therefore a continuous supply is essential.

WHAT TO EXPECT?

- > P3™ improves root growth, nodule development and above ground vegetative growth.
- > P3™ aids in the reduction of stress from environmental stresses, such as extreme cold, excessive moisture, high temperatures, herbicide and hail damage.



Root development and nodulation

Check

Treated



Check

Treated

50.4 bu/ac

59.7 bu/ac



Application Guidelines



0.25 L/ac with a minimum of 5-10 US gal/ac of water.

Can be used alone or in combination with pesticides (see compatibility charts).

Recommended on all pulses at herbicide timing.

Ideal timing is 1-6 node stage for peas and 1-9 node stage for lentils and chickpeas.

DO NOT mix with glyphosate. Use C3 instead.

The product is available in 10 L jugs, 450 L and 1000 L IBC's.

*P3™ is a registered trademark of OMEX Agriculture Inc.

FOLIARS



866-860-9660 /
orders@omexcanada.com



Give Sluggish Crops a Boost

ANALYSIS (6-17-5 + MICROS WITH THE STRESS RELIEVER TECHNOLOGY™)

Application Guidelines



WHAT IS IT?

- > Nutri-Boost® is a low salt index liquid fertilizer for in-crop spray.
- > It's formulated with a high content of Phosphorus along with a complete micronutrients package.
- > Contains the Stress Reliever Technology™ (offsets energy re-allocation during stress periods).

WHEN & WHY USE IT?

- > Use with the herbicide at 3-5 leaf stage.
- > Nutri-Boost® boosts the metabolism, provides energy (high Phosphorus analysis) and relieves the crop from early-season stress (cold, wet, physical or chemical injury, ...).
- > Use after hail storm with SuperB® (10% Boron) to mitigate tissue damage and re-stimulate growth and branching.
- > Use to advance crop maturity.

WHAT TO EXPECT?

- > Improved root and shoot growth and development.
- > Stronger and healthier plants capable of withstanding environmental stresses.
- > Faster recovery from stress (from yellowing to greener crop).
- > Nutri-Boost® helps prevent maturity delays and preserves yield and quality.

Cereals and Canola: 2 L/ac with 5-10 US gal/ac of water.

Can be used alone or in combination with pesticides (see compatibility charts).

Recommended for all crops at the 3-5 leaf stage.

Past this stage, check with your local OMEX® rep for other available products.

Tank-mix with 0.5 L/ac of SuperB® on hail-damaged crops.

Add Nutri-Boost® Fertilizer last when tank mixing with Pesticides. If applied with Super B®, add Super B® last to the tank.

Do not pre-mix concentrated Nutri-Boost® with concentrated Super B in the same container. Always add product into water in the spray tank.

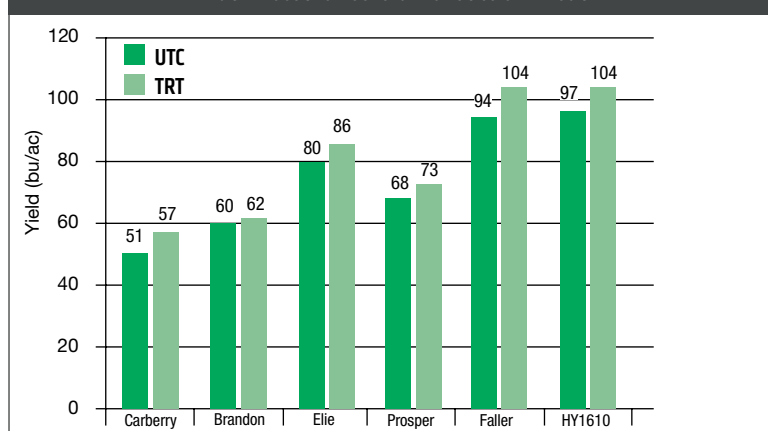
The product is available in 10 L, 450 L, 1000 L IBC's and bulk (32,000L+).

*Nutri-Boost® is a registered trademark of OMEX Agriculture Inc.

FOLIARS



Nutri-Boost® on Several Varieties of Wheat



866-860-9660 /
orders@omexcanada.com

Liquid K^{Xtra}™ | K25™



Liquid K Xtra | K25 The Readily Available Potassium

ANALYSIS: 0-0-12 | 0-0-25

Application Guidelines



WHAT IS IT?

- > Potassium products for in-furrow (K25) and foliar application (K25 or Liquid K Xtra).
- > The dual action of the acetate and hydroxide forms makes these fertilizers readily available and fast-acting.
- > When K25 is used in-furrow with a starter liquid fertilizer, the product dissociation into acetate and a potassium moiety helps reduce tie-up and improve nutrients availability.
- > When Liquid K Xtra is used at the 3-5 leaf stage on cereals along with StimPro-K PGR, it helps reduce the elongation of stems and prevent lodging.
- > Low salt index with a neutral pH.
- > Seed and plant safe.
- > Compatible with most commonly used liquid fertilizers and pesticides.

WHEN & WHY USE IT?

- > To prevent development of potassium deficiency or correct it when it occurs.
- > Add to the liquid fertilizer blend when seeding into coarse-textured or alkaline soils.
- > Use throughout the season when farming soils with high levels of Ca²⁺, Mg²⁺.
- > Highly recommended during drought.
- > Potassium in the seed row improves availability and uptake early-season.
- > Applied at herbicide timing, potassium helps prevent deficiency and crop lodging.
- > Use to supplement a well-balanced soil fertility program.
- > Applied at the 3-5 leaf stage in cereals, Liquid K Xtra along with StimPro-K PGR advances the growth and development of the main stem and tillers resulting in a high-test weight and more even maturity of the harvested grain.

WHAT TO EXPECT?

- > Correction of potassium deficiency.
- > Helps in the prevention of crop lodging.
- > Liquid K Xtra combined at 2L/ac with StimPro-K encourages lateral growth and helps even the tillers and main stems, which lead to a shortening of tall varieties of cereals.
- > Keep good water flow in plants during periods of hot and dry weather.



Potassium deficiency symptoms in canola, potatoes, tomatoes wheat and soybeans that could be prevented or corrected with the use of K25 or Liquid K Xtra.

In-furrow: 2-4 L/ac in-furrow as required of K25.

Foliar: 1-2L/ac foliar as required of either K25 or Liquid K Xtra.

Fertigation: 1-2 L/ac (50-250ml per 1,000 sq. ft.) with irrigation water every 7 to 14 throughout the growing season.

Can be combined with other fertilizer mixes (i.e., APP, UAN, ATS, KTS, KOH, ...).

Can be used with micronutrients as required.

Always recommended to use with a complete spring-applied fertilizer program.

Avoid mixing with acids or other acidic products below a pH of 4.

The product is available in 10 L, 450 L, 1000 L IBC's and bulk (32,000L+).

*LiquidK Xtra™ is a trademark of OMEX Agriculture Inc.

FOLIARS

OMEX[®]

866-860-9660 /
orders@omexcanada.com

Thio-S⁵⁶™ S720™

Foliar Supreme™



Thio-S56 | Foliar Supreme | Flowable Sulfur S720

ANALYSIS: 5-0-0-6% S | 0-16-10-33% S | 51% S

Application Guidelines



WHAT IS IT?

- > Sulfur products for in-furrow (Thio-S56) and foliar application (Thio-S56, Foliar Supreme, S720).
- > Thio-S56 is formulated with Thio form of sulfur that is readily available and fast-acting.
- > Also an excellent source of ammoniacal nitrogen that is quickly absorbed by the plant.
- > Foliar Supreme and S720 are formulated with both fast-acting and slow converting forms of sulfur.
- > Foliar Supreme combines sulfur with readily available essential phosphorus and potassium.
- > All these products are low salt index with a neutral pH.
- > Seed and plant safe.
- > Compatible with most commonly used liquid fertilizers and pesticides.

WHEN & WHY USE IT?

- > To prevent development of sulfur deficiency or correct it if it occurs.
- > Add to the liquid fertilizer blend when seeding into coarse-textured or highly alkaline soils.
- > Use throughout the season when farming soils with high levels of Ca²⁺, Mg²⁺.
- > Sulfur in the seed row improves early-season availability and uptake of phosphorus.
- > Sulfur helps to reduce phosphorus tie-up.
- > Use to supplement a well-balanced soil fertility program.

WHAT TO EXPECT?

- > Prevention of sulfur deficiency.
- > Correction of sulfur deficiency.
- > Balanced ratio of N:S.
- > Less leaching of sulfur under heavy rain or irrigation.
- > Better protein levels in the plants and grains.
- > Foliar application of elemental sulfur creates an inhabitable environment for leaf diseases and contribute to their control.

In-furrow: 1-2 US gal/ac in-furrow as required (i.e., Thio-S56).

Foliar: 1-2L/ac foliar as required (Thio-S56; Foliar Supreme; S720).

Fertigation: 1-5 USgal/ac Thio-S56 (90-450ml per 1,000 sq. ft.) with the irrigation water every 7 to 14 throughout the growing season.

Can be combined with other fertilizer mixes (i.e., APP, UAN, ATS, KTS, KOH, ...).

Can be used with micronutrients as required.

Always recommended to use with a complete spring-applied fertilizer program.

Avoid mixing with acids or other acidic materials below a pH of 4.

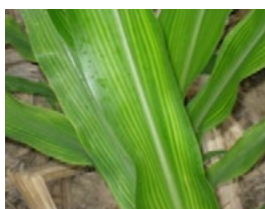
The product is available in 10 L, 450 L, 1000 L IBC's and bulk (32,000L+).

*Thio-S56™ is a trademark of OMEX Agriculture Inc.

*S720™ is a trademark of OMEX Agriculture Inc.

*FoliarSupreme™ is a trademark of OMEX Agriculture Inc.

FOLIARS



Sulfur deficiency symptoms in canola, barley, wheat and corn that could be prevented or corrected with the use of Thio-S56

OMEX[®]

866-860-9660 /
orders@omexcanada.com

SuperB® / KB78®



The Readily Available Boron

SUPER B® ANALYSIS (10% BORON); KB78® ANALYSIS (8% BORON)

Application Guidelines



WHAT IS IT?

- > Liquid fertilizer with high guaranteed analysis of Boron.
- > Formulated with the most available form of Boron for foliar uptake (boric acid).
- > OMEX® Boron solutions are formulated to reduce Point of Deliquescence¹ and promote nutrient uptake by the plant.

WHEN & WHY USE IT?

- > Recommended on a variety of field, horticultural and vegetable crops.
- > Use to mitigate or correct Boron deficiency and supplement soil-applied Boron.
- > Boron is critical for cell division, cell wall structure, and sugar transport.
- > Increasing Boron levels in the plant, makes plants less attractive to insects and complements the effect of insecticides.
- > Application of Boron accelerates the translocation of carbohydrates in the plant and helps with grain fill.
- > Boron is highly recommended after hail because it is involved in the wound-healing process.
- > It is essential for the formation of viable pollen and therefore seed fertilization and development.
- > Boron can be deficient during hot and dry conditions.
- > Flower abortion (heat blast) and blanks in canola/pea are visible signs of Boron deficiency.
- > Boron is immobile in plants, but vital at critical times. It is required in small doses at the right time and is crucial at flowering time.

WHAT TO EXPECT?

- > Stronger plants with better xylem and phloem vessels.
- > Better seed set; less missing seeds in the pods and low abortion.
- > Induces branching in some crops (i.e., soybeans).
- > When used with Nutri-Boost® or C3®, it helps with wound healing and allows for a faster recovery from hail damage.
- > KB78® contains potassium (K) and represents an added-value when K is deficient, under hot and dry conditions and when crop is switching to reproductive mode.

0.5-1.0 L/ac with a minimum of 5-10 US gal/water.

Multiple applications are recommended especially under severe deficiencies.

Do not apply more than 1.5 L/ac in one single spray. If the crop requires more than this rate, split into multiple applications allowing two weeks between sprays.

Can be combined with pesticides (see compatibility charts).

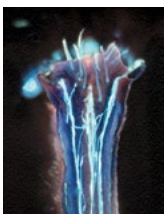
Add Boron last to the tank when mixing with fertilizers or pesticides.

The product is available in 10 L, 450 L, 1000 L IBC's and bulk (32,000L+).

*Super B® and KB78® are registered trademarks of OMEX Agriculture Inc.
¹Point of Deliquescence = the relative humidity limit below which water evaporates and the fertilizer salts out.

FOLIARS

Germinating pollen tubes in canola



Check



Peas Podfill

Treated



Peas Podfill

OMEX®

866-860-9660 /
orders@omexcanada.com

SuperMn⁺



The Solution to Manganese Deficiency

ANALYSIS (10-10-4 WITH 6% Mn)

Application Guidelines



WHAT IS IT?

- > SuperMn⁺ is a highly concentrated suspension of NPK with a guaranteed analysis of 10-10-4 with 6% Manganese.
- > Fast-acting and longer-lasting than similar Manganese sulfate derived products on the market.
- > Formulated to be tank-mixed with glyphosate and other herbicides without impacting weed efficacy.

WHEN & WHY USE IT?

- > It is recommended during herbicide timing and under conditions that reduce Manganese uptake (i.e., cold and wet).
- > Recommended for areas with soil pH > 6.5, where Manganese availability is limited.
- > Also, on high pH or limed soils; heavy manured soils; low pH soils; lighter soils with low potassium or low organic matter; peat soils; soils high in Cu, Fe or Zn.
- > Use when a poor root system is observed to trigger secondary root formation.
- > Highly recommended when dealing with leaf and root diseases.
- > SuperMn⁺ is effective on soybeans and other pulses, oilseeds, cereals, fruits and vegetables with high Manganese requirements.

WHAT TO EXPECT?

- > Less Manganese deficiency, greener crop with an efficient photosynthetic activity.
- > An improvement of the overall nutrient status of the crop.
- > Better fending off diseases and prolong control when used with fungicides (activation of the shikimate pathway).
- > Preservation of yield potential.

Formulated to readily mix with glyphosate products.

1-2 L/ac in 5-10 US gal of spray water volume.

Mix the highly concentrated suspension thoroughly before transfer into the spray tank (if a jug, shake well. If a shuttle, circulate or push air through).

Fill the spray tank at least 2/3 full prior to adding SuperMn⁺.

Maintain proper agitation while mixing.

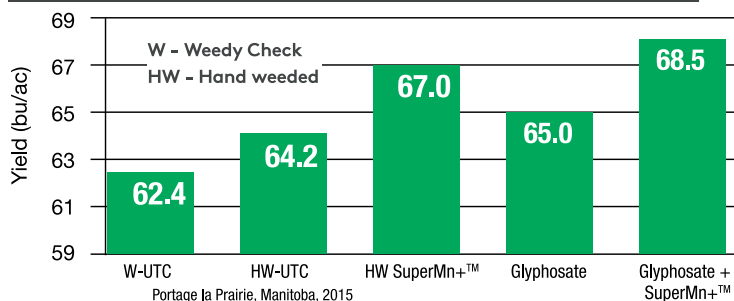
The product is available in 10 L jugs, 450 L and 1000 L IBC's.

*SuperMn⁺ is a registered trademark of OMEX Agriculture Inc.

FOLIARS



(A) glyphosate alone; (B) glyphosate tank-mixed with SuperMn⁺ (5% Mn) and (C) glyphosate tank-mixed with SuperMn⁺ (6% Mn) in MacGregor, Manitoba 2012.



OMEX[®]

866-860-9660 /
orders@omexcanada.com



Improved Plant Nutrition

ANALYSES (13-7-4; 5-25-5; 8-32-5 + MICRO PACKAGE)

Application Guidelines



WHAT IS IT?

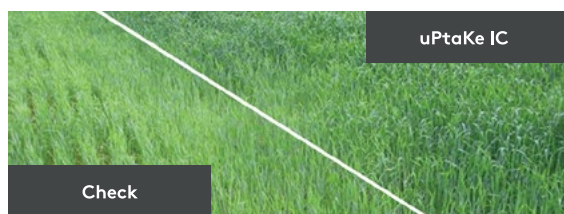
- > High analysis source of Nitrogen, Phosphorus and Potassium, as well as micronutrients, in a specifically formulated foliar blend.
- > Low salt index customized formula.
- > Various analysis:
 - > uPtaKe IC[®] 5-25-5 + micro package.
 - > uPtaKe IC[®] 13-7-4 + micro package.
 - > uPtaKe IC[®] 8-32-5 + micro package.

WHEN & WHY USE IT?

- > Use to supplement a well-balanced soil-applied fertility when the soil is unable to transfer nutrients (waterlogging, drought, heat, high humidity).
- > Use to mitigate or correct crop deficiency and based on tissue test.
- > Phosphorus uptake through the leaves is far greater than through the roots.
- > Uptake and utilization of Phosphorus is improved when balanced with Potassium and Nitrogen.

WHAT TO EXPECT?

- > uPtaKe IC[®] reduces the impact of stress (i.e., wet, cold, dry).
- > uPtaKe IC[®] prevents the appearance of nutrient deficiencies and growth stall of the crop, which could lead to yield loss or delay in maturity.
- > uPtaKe IC[®] improves the nutritional status of the crop during periods of shortage.
- > When used with well-balanced soil fertility, uPtaKe IC[®] provides a positive ROI.



Improved vegetative development.



2-4 L/ac in a spray volume of 5-10 US gal/ac.

Use alone or in combination with pesticides for cereals (3-5 leaf stage, flag, heading), canola (rosette, early bloom at fungicide timing, after podding), flax and legumes (early bloom with the fungicide).

For potatoes, perform 3 applications (10-14 day intervals), beginning at tuber initiation.

The product is available in 10 L jugs, 450 L and 1000 L IBC's.

*uPtaKe IC[®] is a registered trademark of OMEX Agriculture Inc.

FOLIARS

OMEX[®]

866-860-9660 /
orders@omexcanada.com



One Step Closer to Preventing Ergot

ANALYSIS (9-15-0 WITH 5% Cu)

Application Guidelines



WHAT IS IT?

- > Low salt index liquid fertilizer for in-crop foliar spray.
- > Good source of readily available Copper for quick absorption and translocation into the plants; especially for cereals prone to develop Copper deficiency, lodge and become susceptible to ergot.

WHEN & WHY USE IT?

- > For use on crops prone to develop Copper deficiency ("pig tailing" in cereals, pale leaves in broadleaf crops).
- > Recommended for crops grown on high peat soils, sandy and light textured soils, high organic matter soils, heavy manured land, high pH soils and any soils showing low Copper contents.
- > Use to prevent or correct Copper deficiency.
- > Cereal species vary in their sensitivity to Copper deficiency. Sensitivity increases moving from winter wheat to spring wheat, to spring wheat, barley, oats, triticale and rye.
- > Use to improve grain quality (i.e., plumpness in barley with lower proteins).
- > Use in areas where crops are prone to lodging to improve lignification.
- > Use on crops that show pale color and a lesser chlorophyll production and efficiency.

WHAT TO EXPECT?

- > Foliar Advance Cu™ improves chlorophyll production, photosynthesis and the overall crop health.
- > Foliar Advance Cu™ improves lignification and contributes to the reduction of lodging.
- > Foliar Advance Cu™ provides high level of pollen fertility, minimizing the chances of infection with ergot.
- > Reducing the chances for ergot translates into an improved seed quality and grade, hence saving on seed cleaning costs.

0.5-1 L/ac with a minimum of 10 US gal/ac of water.

To lessen Copper deficiency, use multiple applications of Foliar Advance Cu™:

- > At 5 to 8 weeks after seedling emergence (tillering stage).
- > When the oldest heads reach the boot stage.
- > A 3rd application 7-10 days after the 2nd application if dealing with a severe deficiency.

Can be applied with pesticide (see compatibility charts). Avoid mixing with pesticides having higher rates of surfactant if the weather is hot and dry. This combination may cause bronzing on the leaves.

Avoid mixing with Amines, Basagran, Prestige (see compatibility charts).

The product is available in 10 L jugs, 450 L and 1000 L IBC's.

*Foliar Advance Cu™ is a trademark of OMEX Agriculture Inc.



Ergot



"Pig tailing" in wheat due to copper deficiency.

OMEX[®]

866-860-9660 /
orders@omexcanada.com



Revolutionizing Phosphorus and Zinc Nutrition

ANALYSIS (0-26-4 WITH 9% Zn)

Application Guidelines



WHAT IS IT?

- > Highly concentrated formula with Phosphorus, Potassium and Zinc.
- > Low salt index foliar fertilizer.
- > Formulated for fast absorption and long-lasting effect.
- > Also available with the Stress Reliever Technology™ for use at herbicide timing on pulses.

WHEN & WHY USE IT?

- > Early in the season when the conditions are wet and cold to make Phosphorus, Potassium and Zinc less readily available.
- > With the Stress Reliever Technology™ for use at herbicide timing on peas, lentils, chickpeas or flax.
- > Late in the season especially on durum wheat and flax prone to accumulate cadmium if soil Zinc is deficient.
- > To mitigate or correct zinc deficiency in crops grown under low Zinc in the soil, high pH soils, high organic matter soils, light textured and sandy soils, in heavy manured or lime soils, and waterlogged soils.
- > For biofortification, especially for seed growers to produce vigorous seed.

WHAT TO EXPECT?

- > Zintake™ increases Zinc content in the tissue and Zinc content and proteins in the seed.
- > Zintake™ improves crop vigor and health, and increases the crop's metabolism to better cope with environmental stresses.
- > Zintake™ improves crop production, yield and quality.
- > Zintake™ decreases Cadmium levels in the seed (i.e. durum wheat and flax).

Recommended on a wide variety of crops.

1-2 L/ac in 5-10 US gal/ac of water.

Can be combined with commonly used pesticides (check compatibility charts).

DO NOT mix with glyphosate. Use OMEX Zn (9%) instead if Zn is required for the spray with glyphosate.

The product is available in 10 L jugs, 450 L and 1000 L IBC's.

*Zintake™ is a trademark of OMEX Agriculture Inc.

FOLIARS



866-860-9660 / orders@omexcanada.com



The Zinc Biofortification Solution

ANALYSIS (10-0-0 WITH 9% Zn)

Application Guidelines



WHAT IS IT?

- > Low salt index liquid foliar fertilizer with Nitrogen and high Zinc content.
- > Highly soluble and available form of Zinc.

WHEN & WHY USE IT?

- > On most crops grown in Canada as our soils and grains contain lower contents of Zinc.
- > Recommended for crops grown on high pH soils, sandy and light textured soils, high organic matter soils, heavy manured or limed land, heavy textured soils with high K or Mg and any soils showing low Zinc contents.
- > Use to prevent or correct Zinc deficiency, especially under cold wet conditions.
- > Use to improve grain quality and seed vigor.

WHAT TO EXPECT?

- > Foliar Advance Zn™ promotes cell growth, secondary root development, formation of new leaves, vigorous shoot growth and an improved stress tolerance.
- > Foliar Advance Zn™ prevents/corrects Zinc deficiency and increases Zinc content in the tissues.
- > When applied at the milk/soft dough stage in cereals, Foliar Advance Zn™ increases the Zinc and protein content of the grain.
- > The increase in Zn content automatically decreases Cadmium (Cd) content especially in durum wheat and flax.
- > Excellent response to Zinc by pulse crops, oilseeds and cereals.

Early vegetative stage: 0.5-1.0 L/ac.

Late reproductive stage: 1.0-2.0 L/ac.

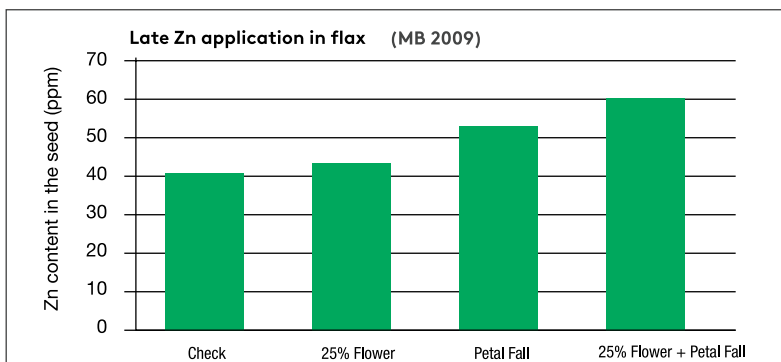
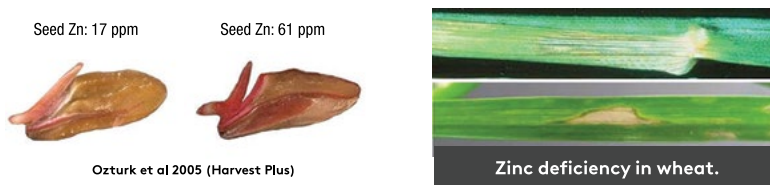
Can be combined with pesticides application (see compatibility charts).

DO NOT mix with glyphosate. Use OMEX Zn (9%) instead if Zn is required for the spray with glyphosate.

The product is available in 10 L jugs, 450 L and 1000 L IBC's.

*Foliar Advance Zn™ is a trademark of OMEX Agriculture Inc.

FOLIARS



866-860-9660 /
orders@omexcanada.com



Strengthens and Prevents Lodging

ANALYSIS (3-0-1 WITH 4.5% SULFUR AND MICRONUTRIENTS)

WHAT IS IT?

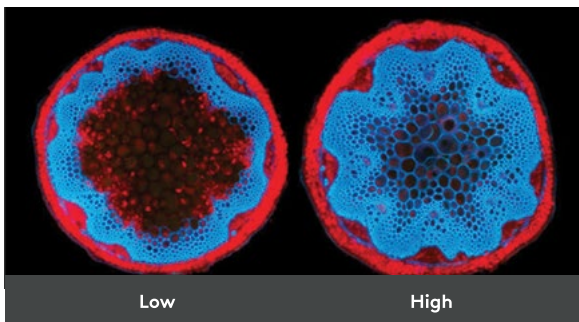
- > Fortis™ is a low salt index liquid fertilizer with high levels of Copper, Manganese and Zinc
- > The product is formulated with fully water soluble ingredients and OMEX®'s proprietary technology that enhances uptake and translocation, while minimizing tissue damage.

WHEN & WHY USE IT?

- > Fortis™ is recommended on all cereal crops at the flag leaf stage.
- > Crop lodging is caused among others (K deficiency, Mn deficiency, too much rain and wind...) by a weak straw strength.
- > Yield and grain quality losses to lodging could be significant as it hampers grain fill and may lead to premature sprouting.
- > Copper and Manganese are key micronutrients for the process of lignification, which allows for the thickening of the straw.
- > Manganese is a trigger for the shikimate pathway and plant health.
- > Zinc stimulates the use of Phosphorus and enhances metabolism.
- > Boron is an important component for cell wall structure.

WHAT TO EXPECT?

- > Fortis™ improves lignification and straw strength and help prevent lodging.
- > Fortis™ corrects Copper, Manganese, Zinc and Boron deficiencies.
- > Fortis™ improves chlorophyll production and photosynthesis.
- > Given the role of Copper for pollen fertility, Fortis™ contributes to ergot prevention and seed quality.



High lignin-accumulating stem (right) versus low accumulating stem (left) (Dr. H. Wang). Lignin (shown in blue) is a compound that adds strength to plant cell walls.



A beginning of lodging in a barley field near Calgary. The crop may or may not recover depending on the time when it occurs. (Photo: Barbara Duckworth)



Application Guidelines



Apply Fortis™ at 1 L/ac with a minimum of 10 US gal of water (15 US gal is preferred).

Recommended alone. If tank-mixed with fungicides see compatibility charts. Some combination may be physically compatible but may cause bronzing effect on the leaves.

Fortis™ is a Copper containing product and as such should be sprayed with a high water volume, especially if tank-mixed with fungicides that require higher rates of surfactant.

Avoid spraying Fortis™ under hot and dry conditions. Spray preferably late during the day going to the evening.

The product is available in 10 L jugs, 450 L and 1000 L IBC's.

*Fortis™ is a trademark of OMEX Agriculture Inc.

FOLIARS



866-860-9660 /
orders@omexcanada.com

Complete CalMax[®]



Advanced Calcium Nutrition

Application Guidelines



ANALYSIS: (10-0-3, 11% Ca + 0-28-19 + MICROPACKAGE)

WHAT IS IT?

- > CalMax Complete[®] is a reacted Calcium formulation.
- > It contains high analysis of Calcium, Nitrogen, Phosphorus, Potassium and micronutrients.
- > CalMax[®] is formulated with the AXM Technology[™] that allows for a better uptake and translocation of Calcium.

WHEN & WHY USE IT?

- > CalMax Complete[®] is recommended on all crops, especially fruits and vegetables.
- > Calcium is taken up in the plants by mass flow but is immobile in the plant. A constant supply is recommended to avoid shortages and deficiencies.
- > Calcium is important for roots and shoots structure early on in the season; during flowering and guidance of pollen tubes; and during fruits maturation and bulking.
- > A typical application should cover these three phases of growth and development (i.e., for potatoes: CalMax Complete[®] is recommended at tuber initiation, then 2-3 times after that within 10-14 day intervals each).

WHAT TO EXPECT?

- > Strong and vigorous plants.
- > High Calcium levels in the tissues (leaves, stems, tubers).
- > Better pollination, less misses in pod crops and less flower abortion.
- > Better skin set in tuber crops and less hallow heart.
- > Higher firmness in soft fruits, allowing for a better storability and tolerance to harvesting and handling of the produces.
- > Reduced bitterpit and other internal disorders induced by the lack of Calcium.

Application rate: 1.0 L CalMax[®] and 0.6 L Complete[®] per acre in a minimum of 10 US gal of water.

Compatible with most commonly used pesticides (see compatibility charts).

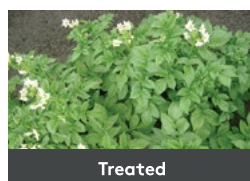
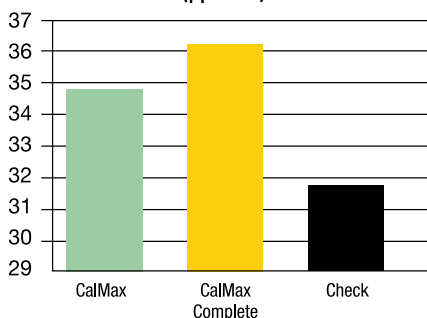
Order of addition to sprayer is (1) water, (2) CalMax Complete[®] and (3) pesticide.

The product is available in cases of 10L (Part A: CalMax[®]) + 6 L (Part B: Complete[®]), 450 L + 270 L, and 1000 L + 600 L IBC's.

*CalMax Complete[®] is a registered trademark of OMEX Agriculture Inc.

FOLIARS

Effect of Calcium sprays on foliage Calcium (ppm Ca)



OMEX[®]

866-860-9660 /
orders@omexcanada.com



The Chlorophyll Builder

ANALYSIS 0-29-5 w/4%Mg | 10-0-0 w/4% Mg

Application Guidelines



WHAT IS IT?

- > Fully soluble and highly available source of essential macronutrients (NPK) and magnesium.
- > PK Bulk is a good source for phosphorus, potassium and magnesium.
- > Uptake Mg is a good source of nitrogen and magnesium.
- > Both formulated to absorb and act fast to correct Magnesium deficiency.

WHEN & WHY USE IT?

- > Suitable for all major field and horticultural crops and vegetables.
- > Use to optimize yield and productivity as it contains NPK and Mg.
- > Use when soil type, moisture and pH are affecting NPK and Mg availability during critical phases of growth and development.
- > Magnesium deficiency is often experienced in areas of light sandy soils with a low pH.
- > Magnesium is a vital component for chlorophyll and proteins synthesis as well as energy production in the plant.
- > PK Bulk or Uptake Mg can be used to balance the K:Mg ratio, which is important for optimal growth and development, regulation of water use efficiency, photosynthesis and the translocation of carbohydrates.
- > Deficiency in magnesium translates into a lack of vigor and delayed reproductive stages.
- > Magnesium deficiency exposes the crops to oxidative stress.

WHAT TO EXPECT?

- > Correction or prevention of Magnesium deficiency, which results in greener crops due to the Mg being the center molecule of the chlorophyll.
- > Increased Magnesium levels in the tissues.
- > Better uptake of Calcium and Potassium.
- > Correction of PK or N deficiency.
- > Promotion of photosynthesis, vigor, reproduction, and carbohydrate translocation, which contribute to better grain fill.
- > Increased tolerance to oxidative stress late in the season.



Magnesium deficiency symptoms in canola leaves.



Magnesium deficiency symptoms in dry bean leaves.

In-furrow: 2-4 L/ac at seeding.

Foliar: 1-2L/ac with a high water volume.

Fertigation: 1-2 L/ac (50-250ml per 1,000 sq. ft.) with the irrigation water every 7 to 14 throughout the growing season.

It is compatible with most commonly used pesticides and fertilizers. A jar test is recommended especially if the desired combination has not been previously used*.

Additional chelated micronutrients can be included as required.

The product is available in 10 L jugs, 450 L and 1000 L IBC's.

*PK Bulk™ is a trademark of OMEX Agriculture Inc.
*Uptake Mg™ is a trademark of OMEX Agriculture Inc.

FOLIARS



866-860-9660 /
orders@omexcanada.com

BIOLOGICALS



Beneficial microbes evolved a mutualistic or symbiotic relationship with cultivated plants. They have the ability to stimulate their growth and development while benefiting from the root exudates for their food.

The use of beneficial microbes allows an improvement of nutrients uptake, a stimulation of plant growth and development, a promotion of the overall health, and an enhancement of yield and quality.





The Microbial Supplement for Enhanced Production & Health

ANALYSIS: 2 RHIZOBACTERIA *BACILLUS SUBTILIS* 2x10⁹ CFU/g |
BACILLUS AMYLOLIQUEFACIENS 2x10⁹ CFU/g

Application Guidelines



WHAT IS IT?

- > CFIA-registered supplement: Reg. # 2017129A, Fertilizers Act.
- > Agriflora Soil™ is a microbial supplement designed to enhance plant growth and development, nutrients uptake, the overall health, yield and quality.
- > Agriflora Soil™ is formulated with a consortium of two PGPR (Plant Growth Promoting Rhizobacteria) from the genus *Bacillus*; a naturally-occurring beneficial.
- > It's seed, plant and user safe.
- > Also has an organic certificate.

WHEN & WHY USE IT?

- > The product is recommended on all crops including field, horticultural and vegetable crops such as potatoes, soybeans, corn, legumes, brassicas and cereals.
- > PGPR *Bacillus* interacts with crops, resulting in:
 - > An increase in production of phytohormone such as auxins, cytokinins and gibberellins, which activate growth and development;
 - > A better root growth and colonization of the rhizosphere;
 - > An increase in bio-availability of essential nutrients such as N, K, Fe, Ca and Mg;
 - > A better solubilization of phosphates;
 - > A facilitated growth and development in the presence of stress such as high salinity and poor soil.

WHAT TO EXPECT?

- > An improved growth and development especially under stress conditions.
- > Better nutrients uptake.
- > More tolerance to adverse conditions due to weather, pathogens and pests.
- > Altogether leads to a preserved yield and quality.

In-furrow:

40-80 ml/ac at seeding with small grains;
400-800 ml/ac for vegetables at planting.
Agriflora Soil™ is compatible mixed with liquid fertilizers (including concentrates).

Seed Treatment:

Apply at a rate of 100ml/100kg of seed.
Compatible with microbial inoculants.

Dry Fertilizer Impregnation:

Agriflora Soil™ can be applied on granular fertilizer through impregnation (3-5 L/ metric Ton).

Can be combined with liquid fertilizers used as starters or through the drip irrigation.

SHAKE WELL before using the concentrated product.

Use immediately after dilution. Do not store for later use.

Store at 2 - 25°C.

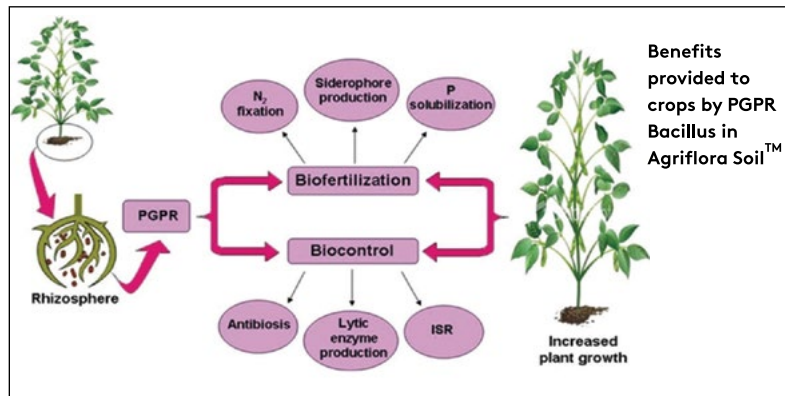
Do not mix with antibiotics, peroxides, quaternary ammonium, hypochlorites or other antibacterial products.

Results may vary from one site to another.

The product is available in cases of 2x10 L jugs

*Agriflora Soil™ is a trademark of Abnatura.

BIOLOGICALS



OMEX[®]

866-860-9660 /
orders@omexcanada.com

AgrifloraTM Foliar



The Sprayable Microbial Supplement

ANALYSIS: 2 RHIZOBACTERIA *BACILLUS SUBTILIS* 2x10⁹ CFU/g | *BACILLUS AMYLOLIQUEFACIENS* 2x10⁹ CFU/g

Application Guidelines



WHAT IS IT?

- > CFIA-registered supplement: Reg. # 2017129A, Fertilizers Act.
- > Agriflora FoliarTM is a microbial supplement formulated for foliar application to allow an improvement of nutrients uptake, stimulate plant growth and health, and enhance yield and quality.
- > Agriflora FoliarTM contains two naturally-occurring Rhizobacteria *Bacillus* with plant growth promoting abilities.
- > It's seed, plant and user safe.
- > Also has an organic certificate.

WHEN & WHY USE IT?

- > Agriflora FoliarTM is recommended on all crops and during many stages of growth and development.
- > Early in the season Agriflora FoliarTM with its rapid colonization of the rhizosphere provides roots with a biofilm shield against pathogens
- > It also produces essential auxins, cytokinins and gibberellins that stimulate plant growth and encourage branching.
- > As a symbiotic beneficial, Agriflora FoliarTM secretes a myriad of exoenzymes involved in improving the uptake of phosphorus (P) and other macro- (N, K), secondary (Ca, Mg) and micro-nutrients (Zn, Mn, Cu, Fe). This lead to an optimal growth and development, which allow crop to remain healthy and resilient to a variety of biotic and abiotic stresses.

WHAT TO EXPECT?

- > Stimulation of growth and development.
- > Optimal uptake of nutrient and less deficiencies.
- > High tolerance to biotic and abiotic stresses caused by the environment, pathogens and pests.
- > Higher yields and quality.

SPRAY

Application rate: 80 ml/ac

Mix at a ratio of 2:1,000 (vol:vol).

Example:

Agriflora Foliar TM	Water
200 ml	100 L
500 ml	250 L

Spray to wet the soil, stems and foliage. The sprayed volume may vary depending on crop type, growth stage and spraying equipment. For ultra-low volume (ULV), calculate the amount based on a standard spray volume. Start treatment with two applications 7 days apart (boost). Repeat applications at a frequency of 14-28 days. Keep the frequency every 7-14 days during periods of unfavorable conditions.

Can be combined with liquid fertilizers.

SHAKE WELL before using the concentrated product.

Use immediately after dilution. Do not store for later use.

Store at 2-25°C.

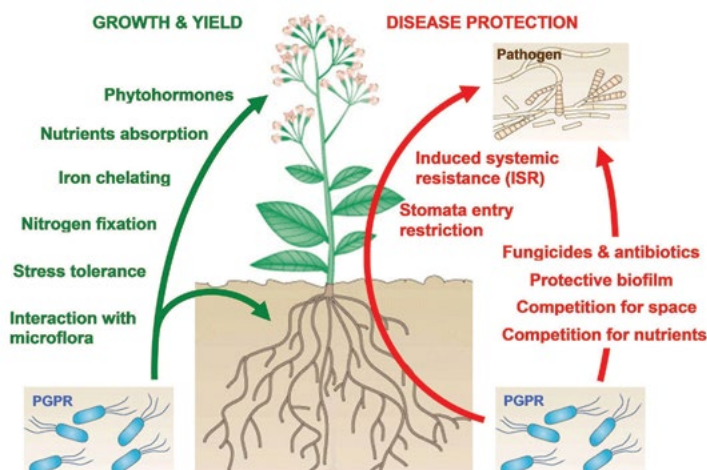
Do not mix with antibiotics, peroxides, quaternary ammonium, hypochlorites or other antibacterial products.

Results may vary from one site to another.

The product is available in cases of 2x10 L jugs

*Agriflora FoliarTM is a trademark of Abnatura.

Mechanisms of action of PGPR bacteria such as Agriflora FoliarTM



OMEX[®]

866-860-9660 /
orders@omexcanada.com

PGRs

Plant Growth Regulators a.k.a PGR's are naturally occurring organic substances, other than nutrients, that are applied exogenously to regulate various processes of growth & development of the crop (i.e., cell division, branching, flowering,...). PGR's are effective at low doses and don't leave any undesired residues that hinder grain deliveries and trades. Some of these are elicitors of plant defenses to pathogens and pests and contribute to the enhancement of plant health and the activity of fungicides and insecticides.



StimPro™

a.k.a GRX-SP;Prime

GRO-Root Xtra Special (StimPro™)

ANALYSIS (3-IBA 1.00%, KINETIN 0.25%, 0.3% SA, 0.3% VIT B1, 0.3% VIT C)



Application Guidelines



WHAT IS IT?

> StimPro™ is a CFIA registered plant growth regulator (Fert. Act # 2003001A)

> It contains Auxin and Cytokinin.

WHEN & WHY USE IT?

- > StimPro™ is recommended on all crops at the 3-5 leaf stage.
- > Use through drenching applications for rooting and to alleviate transplant shock.
- > StimPro™ can be sprayed onto the leaves and translocated down to the roots for rapid cell division and new root tissue growth.
- > StimPro™ is a plant growth regulator product that contains an auxin to encourage root formation and cytokinin to increase the rate of cell division.
- > When the plant is small, additional auxin is needed from the new leaf tissue in order to maximize root growth.
- > During difficult climatic conditions, the leaves have a difficult time emerging rapidly enough to supply the roots and growing plants with the appropriate amounts of auxin.
- > When early conditions are cool, the foliar spray of StimPro™ will give the seedling added vigor in both root and top growth.
- > StimPro™ acts as a safener when sprayed with herbicide.

WHAT TO EXPECT?

- > Increased plant vigor and stalk strength.
- > Increased root mass.
- > Increased nutrient uptake.
- > Healthier plant, reduces transplant shock.
- > StimPro™ increases plant weight, root weight, crop quality and yield.

IMPORTANT: Water pH must be below 7.

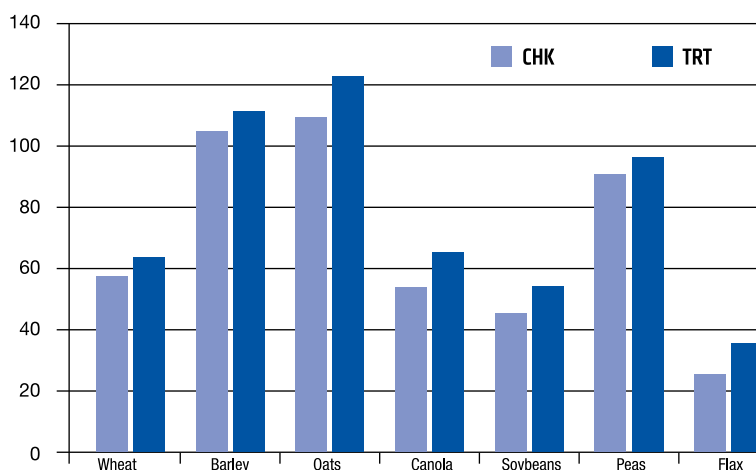
Rate: 75 ml/ac (160 acres to the case).

Can be tank mixed with most commonly used pesticides (check compatibility charts).

The product is available in 2 x 6 L cases, 450 L and 1000 L IBC's.

*StimPro™ is a trademark of OMEX Agriculture Inc

PGRS



OMEX®

866-860-9660 /
orders@omexcanada.com

StimPro-K™

a.k.a KinGro;K;Cyto

StimPro-K™

ANALYSIS (0.9% KINETIN, 0.3% SA, 0.3% VIT B1, 0.3% VIT C)



Application Guidelines



WHAT IS IT?

- > StimPro-K™ is CFIA registered plant growth regulator: Reg. # 2003001A, Fertilizers Act.
- > It's a cytokinin.

WHEN & WHY USE IT?

- > StimPro-K™ is recommended on all crops including cereals, pod crops such as canola, soybeans and pulses, oilseeds, forages as well as fruit and vegetables.
- > Applied early in the season (3-5 leaf stage) StimPro-K™ increases the rate of cell division, differentiation and growth.
- > Applied later in the season (during seed and fruit set) StimPro-K™ increases the size of the cells making higher thousand kernel weight (TKW) and bigger size fruit.
- > StimPro-K™ advances the growth and development of the main stem and tillers resulting in a high test weight and more even maturity of the harvested grain.
- > When used early in the season (3-5 leaf stage) with Liquid K Xtra, StimPro-K™ helps reduce the elongation of stems, even the tillers and main stem and prevent lodging.

WHAT TO EXPECT?

- > Greener crop especially in periods of stress.
- > Bushier plants with an increased branching.
- > Even tiller and main stems.
- > Higher Thousand Kernel Weight (TKW).

StimPro-K™ is recommended at rate of 75ml/ac (160 acres per case). Check the label for more information by crop and stage.

Apply StimPro-K™ early to encourage branching and impact yield potential.

Applied during fruit and seed set, StimPro-K™ can increase the TKW.

Apply the mixture of StimPro-K™ + K (Liquid K Xtra) at 3-5 leaf stage in cereals to even the tillers and main stem and lower the chances of lodging.

The mixture is compatible with most commonly used herbicides (see compatibility charts).

This product is available in, Cases of 2x6 L jugs, 450 L and 1000 L IBC's.

It's also available mixed in with a variety of nutrients especially K (Liquid K Xtra™) in 1000 L IBC's and bulk (32,000L+).

*StimPro-K™ is a trademark of OMEX Agriculture Inc.

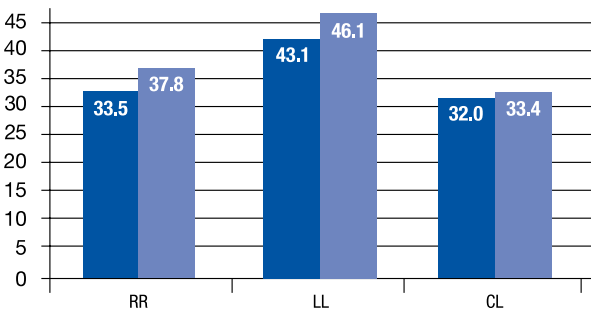


Figure 1. Effect of StimPro-K applied with the herbicide on yield in canola

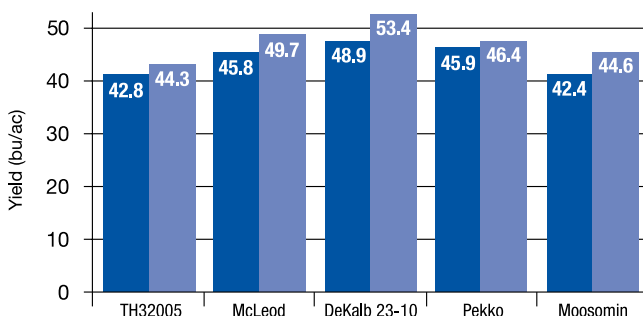


Figure 2. Yield response of several varieties of soybeans to the application of StimPro-K with the herbicide

PCRS

OMEX®

866-860-9660 /
orders@omexcanada.com

Cytokelp™



Plant Growth Regulator

ANALYSIS (0.17-0-0.24 + 0.13% Ca, 0.08%Mg, WITH 0.25% KINETIN, 6% KELP EXTRACT AND 5% YUCCA EXTRACT)

Application Guidelines



WHAT IS IT?

- > Cytokelp™ is a CFIA registered plant growth regulator (Fertilizers Act # 2015147A).
- > It contains the Cytokinin Kinetin.
- > Cytokelp™ also contains Kelp and Yucca extracts that are well documented to be involved in reducing stress and stimulating growth.

WHEN & WHY USE IT?

- > Cytokelp™ is recommended on a variety of field crops, vegetables and fruit trees.
- > It can be applied in-furrow, by drip-irrigation or drenching or as in-season foliar at the 3-5 leaf stage and early bloom.
- > Cytokelp™ contains naturally occurring plant biostimulants that help seedling and plant growth and may increase the number and size of flowers/fruit, crop quality and yield while reducing environmental stress.
- > Kinetin is the only Canadian registered cytokinin that can be used on a variety of crop species.
- > Kinetin increases the rate of cell division, differentiation and growth.
- > It also delays senescence in plant tissues, increases flower set, fruit formation and side branching.
- > Kinetin applied at the right timing can lead to an enhancement of growth and development, seed and fruit set and ultimately yield.

WHAT TO EXPECT?

- > Stimulation of crop growth and development especially under stress situations.
- > Cytokelp™ increases the plant biomass; number and size of flowers/fruit.

Rate: Use on all field crops at 162 ml/ac at 3-5 leaf stage and at early bloom stages. On vegetable apply Cytokelp™ 14-21 days after emergence.

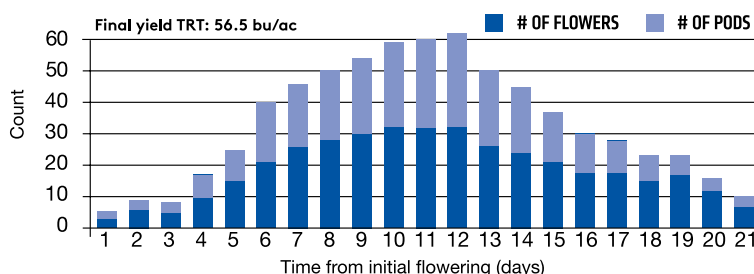
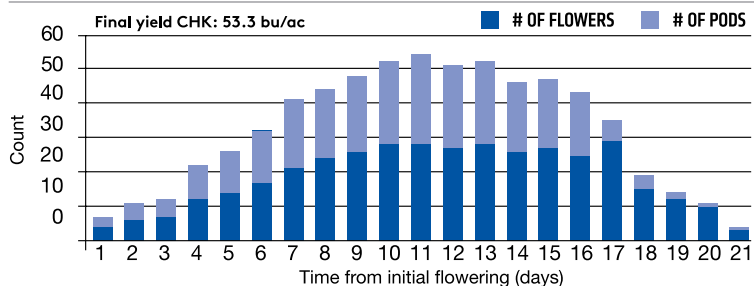
On turf apply 20-40 ml/100 meter square when grass becomes established. Repeat as necessary.

Cytokelp™ can be used for hydroponic at 2 ml/L on all crops from 3-5 leaf stage to bloom.

The product is available in cases of 2x6 L jugs, 450 L and 1000 L IBC's.

*Cytokelp™ is a trademark of Agrowchem Inc.

PGRS



866-860-9660 /
orders@omexcanada.com

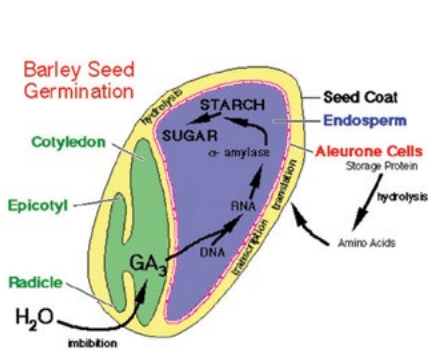


Breaking Dormancy

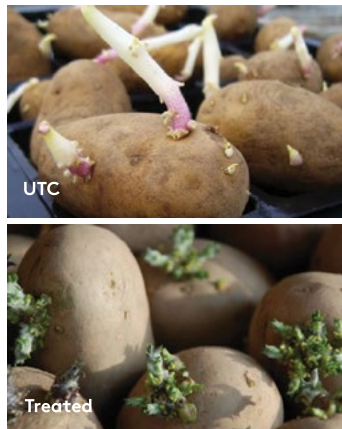
ANALYSIS: 5% GA₃ (GIBBERELIC ACID)

WHAT IS IT?

- > CFIA-registered supplement: Reg. # 2018121A, Fertilizers Act
- > The product contains gibberellic acid (GA₃), a very potent plant growth regulator that control several processes of crops growth and development.
- > GA₃ is the hormone that triggers rice to grow out of the water in the paddies.
- > GA₃ promotes plant and flower growth and increased fruit set.
- > It aids in frost protection, overcoming dormancy, and inhibits root formation in cuttings.
- > Applications of very low concentrations can have a profound effect.
- > However, excessive application or higher rates may result in undesirable stem elongation.
- > Timing of application is also crucial for insuring a beneficial effect.



Barley seed germination showing the early involvement of GA₃ in the process.



WHEN & WHY USE IT?

- > The product is recommended on all crops including field, horticultural and vegetable crops as well as fruit trees, turf and ornamentals.
- > It can be used to break dormancy and enhance emergence in tuber and root crops.
- > GA₃ is produced first in the seed to trigger production of the alpha-amylase that stimulates seed germination.
- > It helps with tolerance to cold and frost conditions early in the season.
- > GA₃ is known to increase fruit and seed size.
- > Gibberellins stimulate cell elongation and cause the plants to grow taller.

WHAT TO EXPECT?

- > Better germination and early season establishment.
- > An improved growth and development especially under cool and cold stress conditions.
- > Better seed and fruit sizes.
- > Enhanced yield and quality.

Application Guidelines



Rate: Follow the recommended rates and timing listed on the label for each crop and do not exceed the recommendation.

Rate varies from 20-500 ml per acre depending on the crop and stage of growth and development.

Fill spray tank with half of the full volume of water and then add required amount of StimPro-GA₃ 5%, followed by the remaining water. Add desired amount of surfactant after adding all required water.

Agitate vigorously for a minimum of 10 minutes before beginning application.

Use appropriate water volume to guarantee good coverage.

For full product activity, application should be made under cool, slow-drying weather conditions, preferably early in the morning or late in the day. Avoid hot, windy periods. StimPro-GA₃ 5% has low solubility in water and cannot be used in high concentrations. In solution, it has limited stability and should be applied as soon as possible.

Several factors may affect StimPro-GA₃ 5% efficacy including:

Rainfall within 4-6 hours of application will reduce activity significantly.

Very early maturing varieties may not respond to StimPro-GA₃ 5%.

Trees under stress because of low soil moisture, nutrient deficiency, severe weed competition, insect, disease or rodent damage may not respond to StimPro-GA₃ 5%.

Inadequate spray coverage.

A heavy crop load (high fruit/leaf ratio) may reduce effectiveness.

All necessary precautions should be taken to avoid spray drift into adjoining residential properties, orchards, aquatic habitats and roadways.

The product is available in cases of 2x6 L jugs.

*StimPro-GA₃ 5% is a trademark of OMEX Agriculture Inc

OMEX[®]

866-860-9660 /
orders@omexcanada.com



Defense Responses Aid to Pathogens & Pests

ANALYSIS: 0.025% JA (JASMONIC ACID)

Application Guidelines



WHAT IS IT?

- > CFIA-registered supplement: Reg. # 2018135A, Fertilizers Act
- > The product contains Jasmonic acid (JA), a naturally-produced growth regulator involved in many plant processes including growth and development and defense responses against pests and pathogens.
- > JA is the signal molecule of the Induced Systemic Resistance (ISR) that allows plants to trigger their natural immunity against intruders.
- > Jasmonate are also used by plants as a long range signal to warn neighboring plants to prepare for upcoming infection/infestation.

WHEN & WHY USE IT?

- > The product is recommended on all crops including field, horticultural and vegetable crops as well as fruit trees, turf and ornamentals.
- > Apply JA to increase crop survival during abiotic stress.
- > Use JA to keep crops healthy.
- > JA helps prolong crop tolerance/resistance to biotic stress caused by pathogens and pests.
- > Use JA to prevent infection by necrotrophs or to reinforce the effect of mono-site fungicides (i.e., Strobilurins) in controlling them.
- > The use of JA alongside mono-site fungicides is a tool to reduce resistance build-up on the farm.
- > Use JA to complement the efficacy of insecticides (chewing or sucking insects) and reduce the build-up of resistance.

WHAT TO EXPECT?

- > Healthier crops and long-lasting effect of disease control when used together with fungicides.
- > Improved growth and development especially under cool and cold stress conditions.
- > Healthier crops often yield higher.
- > Better seed and fruit quality.

Rate: 40-80ml/ac

Follow the recommended rates and timing listed on the label for each crop and do not exceed the recommendation.

JA can be used as a foliar spray, a soil drench and through fertigation systems.

Compatible and can be mixed with most fungicides, insecticides and other liquid fertilizers.

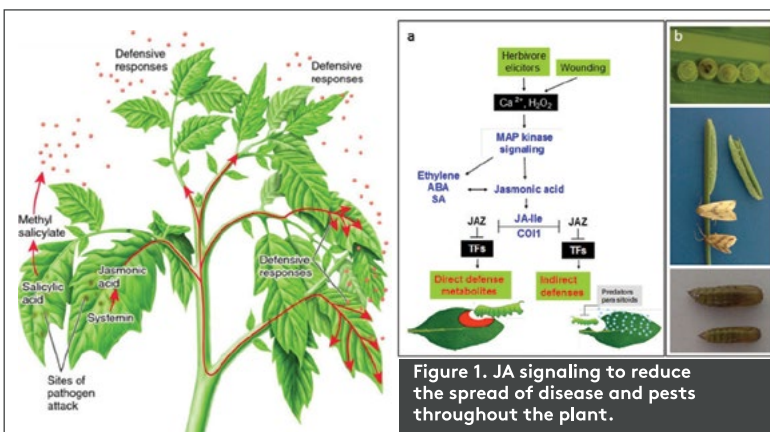
Do not mix concentrates together.

Add water to spray tank to ¾ full followed by JA, pesticides and fertilizers.

When mixing with liquid fertilizer, do not exceed the recommended rate of 80 ml/ac/application.

The product is available in cases of 2x6 L jugs.

*StimPro-JA™ is a trademark of OMEX Agriculture Inc



866-860-9660 /
orders@omexcanada.com



Trigger Defense Response & Prevents the Build-up of Resistance

ANALYSIS: 0-0-4.6 WITH 10% SA (SALICYLIC ACID)

WHAT IS IT?

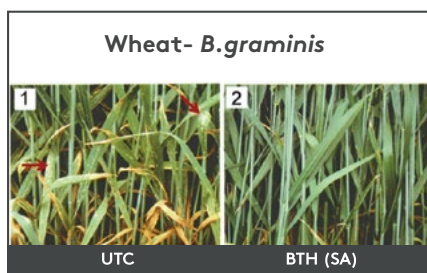
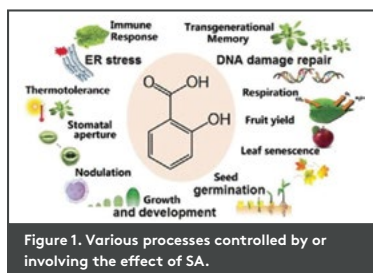
- > CFIA-registered supplement: Reg. # 20187069A, Fertilizers Act
- > The product contains salicylic acid (SA), an important plant hormone that regulates several processes of crops growth and development, photosynthesis, transpiration, ion uptake and transport as well defense responses against pathogens and pests.
- > SA regulates processes spanning from seed germination to nodulation, stomatal opening and thermoregulation to respiration and immune responses.
- > Salicylic Acid improves resistance to environmental stressors including drought, temperature, and salinity; and enhances flowering and fruit yield.
- > SA is typically produced in the infected parts of the plant and is translocated systemically to alert the healthy parts. This process is called the Systemic Acquired Resistance (SAR).
- > Applications of very low levels of SA prior to the disease spread or in combination with mono-site fungicides (i.e., Strobilurins) can lead to a significant reduction in disease pressure.

WHEN & WHY USE IT?

- > The product is recommended on all crops including field, horticultural and vegetable crops as well as fruit trees, turf and ornamentals.
- > Use SA to keep crops healthy.
- > SA helps prolong crop tolerance/resistance to biotic stress caused by pathogens and pests.
- > Use SA to prevent infection by biotrophs or to reinforce the effect of mono-site fungicides (i.e., Strobilurins) in controlling them.
- > The use of SA alongside mono-site fungicides is a tool to reduce resistance build-up on the farm.

WHAT TO EXPECT?

- > Healthier crops and long lasting effect of disease control when used together with fungicides.
- > An improved growth and development especially under cool and cold stress conditions.
- > Healthier crops often yield higher.
- > Better seed and fruit quality.



Application Guidelines



Rate: 20ml/ac

Follow the recommended rates and timing listed on the label for each crop and do not exceed the recommendation.

StimPro-SA-L-10%™ can be used as a foliar spray, a soil drench and through fertigation systems.

Compatible and can be mixed with most fungicides, insecticides and other liquid fertilizers.

Do not mix concentrates together.

Add water to spray tank to ¾ full followed by StimPro-SA-L-10%™, pesticides and fertilizers.

When mixing with liquid fertilizer, do not exceed the recommended rate of 20 ml/ac/application.

The product is available in cases of 2x6 L jugs. It's also available mixed in with copper (i.e., CuNhancer).

*StimPro-SA™ is a trademark of OMEX Agriculture Inc

PCRS



866-860-9660 /
orders@omexcanada.com

Chitosan™



The Natural Elicitor

ANALYSIS: 4% CHITOSAN

Application Guidelines



WHAT IS IT?

- > CFIA-registered supplement: Reg. # 2017113A, Fertilizers Act.
- > Chitosan™ is a compound naturally found in crustacean shells and fungal cell walls, and can be very beneficial to plant production and growth.
- > Chitosan™ enhances plant survival and yield in times of heat, cold stress or drought.
- > When foliar-applied to crops it allows the plants to grow with less water.
- > Exogenous application of Chitosan™ has also been shown to accelerate growth, germination and improve the quality of flowers and fruit.
- > Applied to produce, Chitosan™ helps prolong their shelf life and prevents early decays.
- > Application of Chitosan™ can trigger plant defense responses and lead to a significant reduction in disease pressure.
- > Timing of application is crucial for insuring a beneficial effect.

WHEN & WHY USE IT?

- > The product is recommended on all crops including field, horticultural and vegetable crops as well as fruit trees, turf and ornamentals.
- > Chitosan™ improves seed germination and seedling establishment.
- > Apply Chitosan™ to improve the overall health and resilience of the crop to stressful conditions (cold, heat, drought, ...).
- > Chitosan™ helps plants manage water use efficiency (WUE).
- > As a biostimulant, Chitosan™ triggers plant's natural immunity against pathogens and can be used to complement fungicides effect.
- > Applied post-harvest, Chitosan™ can prolong produce shelf life.

WHAT TO EXPECT?

- > An improved growth and development especially under cold, hot and drought stress conditions.
- > Healthier crops often yield higher.
- > Better seed and fruit quality.

Follow the recommended rates and timing listed on the label for each crop and do not exceed the recommendation.

Rate: 60-250ml/ac depending on the crop and stage (see the label).

To prepare solution, add one half the total amount of water, add recommended volume of Chitosan™ and continue adding water until desired application volume is reached.

For foliar applications, apply with minimum volume of 10 US gal/ac.

The product is available in cases of 2x6 L jugs.

*Chitosan™ is a trademark of OMEX Agriculture Inc

PGRS

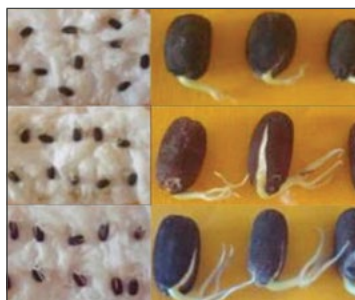


Figure 1. Effect of addition of Chitosan™ on the germination of spurge seeds (Source: Pabón-Baquero et al. 2015).

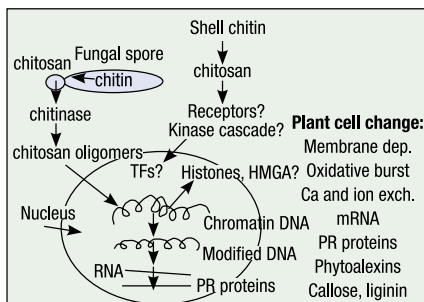


Figure 2. Versatility of use of Chitosan™ in many fields including the elicitation of plant innate defenses to pathogens.

OMEX®

866-860-9660 /
orders@omexcanada.com



Application Guidelines



The Natural Biostimulant

ANALYSIS: 0.5% TRIACONTANOL

WHAT IS IT?

- > CFIA-registered supplement: Reg. # 2018063A, Fertilizers Act.
- > Triacontanol is a plant growth regulator naturally found in plant epicuticular waxes and beeswax.
- > It is present in abundance in the leaves of most plants.
- > Triacontanol affects many aspects of crops growth and development including photosynthesis; protein synthesis; water uptake and nutrients; yield; seed and fruit number, size and quality; and oil production.
- > Triacontanol triggers the release of Adenosine, a fast-acting second messenger important for the regulation of transpiration and translocation of sugars, amino acids, soluble proteins, and fatty acids in various crops.

WHEN & WHY USE IT?

- > The product is recommended on all crops including field, horticultural and vegetable crops as well as fruit trees, turf and ornamentals.
- > Include low doses with all sprays.
- > Use to enhance growth and protect against abiotic stress.

WHAT TO EXPECT?

- > An improved growth and development especially under stress conditions.
- > Better regulation of water use efficiency (WUE).
- > Better translocation of sugars and other metabolites.
- > Enhanced oil content in oilseeds.
- > Good yield along with quality.

Include TRIA™ with dry or liquid fertilizer applied in-furrow.

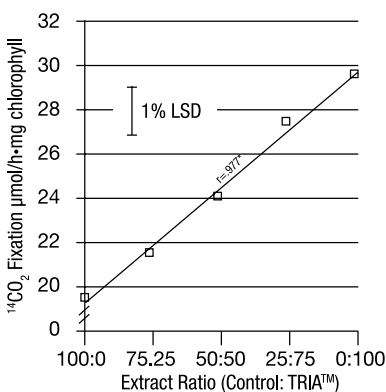
Include with all foliar sprays (60ml/ac).

Apply with enough water to guarantee a uniform coverage.

TRIA™ is compatible with most commonly used pesticides and fertilizers.

The product is available in cases of 2x6 L jugs.

*TRIA™ is a trademark of OMEX Agriculture Inc.



TREATMENT	ACTIVE SITE CONCENTRATION nmol/mg Chl	ACTIVITY µmol CO ₂ /h·mg Chl	SPECIFIC ACTIVITY µmol CO ₂ /min·mg protein
Control	13.4	261.3	4.73
TRIA™	12.9	351.8*	6.61*

*F-ratio for difference between treatments is significant at the 1% level.

Figure 1. Effect of the addition of Triacontanol on photosynthesis and CO₂ fixation (Source: Houtz et al., 1985).

PCRS



866-860-9660 /
orders@omexcanada.com



The Crop Protector against Stress

ANALYSIS: 0.01% 2,4 EPIBRASSINOLIDE

Application Guidelines



WHAT IS IT?

- > CFIA-registered supplement: Reg. # 2018109A, Fertilizers Act.
- > StimPro BR® is a PGR containing 2,4-Epibrassinolide, which is a brassinosteroid (BR).
- > BRs are naturally occurring plant hormones that promote plant growth, increase crop yield and quality, and protect against abiotic stress.
- > They are proven to aid in protection against thermal, moisture, salt and heavy metal stress.
- > StimPro BR® is most effective when used in conjunction with foliar fertilizers to optimize uptake and efficiency, which can lead to an increased productivity, quality and survival of crops.

StimPro BR® is recommended at a rate of 20ml/ac.

Apply with enough water to guarantee a uniform coverage.

StimPro BR™ is compatible with most commonly used pesticides and fertilizers.

The product is available in cases of 12x0.8L jugs.

*StimPro BR™ is a trademark of OMEX Agriculture Inc.

WHEN & WHY USE IT?

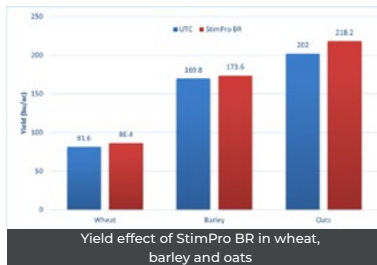
- > The product is recommended on all crops including field, horticultural and vegetable crops as well as fruit trees, turf and ornamentals.
- > BRs are phytoestrogens that can regulate plant growth and development.
- > They promote cell division and elongation, swelling, curvature, and splitting of the treated internode.
- > BRs are believed able to promote and accelerate plant growth and increase crop yield, fresh and dry weight of seeds, root size, and resistance to lodging.
- > Exogenous treatments can encourage shoot growth and establishment of new shoots and lengthen leaves and stems.

WHAT TO EXPECT?

- > Improved root development and growth.
- > Better nutrient availability and uptake in the tissues.
- > Improved tolerance to lodging in the cereals.
- > In tuber crops like potatoes, BRs usage could result in an increase in tuber count and an even size, which improves marketable yield.
- > BRs appear to induce resistance to most biotrophs (i.e., Septoria; Mildew; Phytophthora; Aphanomyces) and susceptibility to most necrotrophs (i.e., Fusarium, Rhizoctonia; Ascochyta) and hemibiotrophs (i.e., Sclerotinia).



Growth and development of pea and cucumber plants in which production of brassinosteroids has been altered (left) or not (right). (Source: Wilfried Rozhon, Technische Universität München – TUM).



PGRS



866-860-9660 / orders@omexcanada.com

SPECIALTY

Although our main focus is to provide Primers, seed dressings, Starters, fully water-soluble Foliars, Plant Health Promoters-PHPs, Plant Growth Regulators-PGRs, Biologicals and Biostimulants, we strive to supply many tailored formulations that fit specific needs, crops and farm conditions. In addition, we supply organically-certified products and a few pesticides as well as many additives including water conditioners, wetters, stickers, spreaders, defoamers, drift control, and compatibility agents.



Alleviating Deficiency and Boosting Growth

ANALYSIS (6-2-4/3-1-8/0-0-4/0-0-8)

WHAT IS IT?

- > Organomex™ includes concentrated suspensions containing Nitrogen, Phosphorus, Potassium and micronutrients.
- > Available in two analysis: 6-2-4 (vegetative growth) and 3-1-8 (reproductive stage).
- > It's formulated with plant extracts and Kali Vinsasse and do not contain any GMO ingredients or 'live' material.
- > Extremely effective multi-purpose fertilizers that can be used as a foliar feed or as a fertigation product.
- > Organomex™ is the industry standard for certified fertilizer for organically-grown crops.
- > Formulated to be rapidly taken up by both the foliage and roots so that beneficial results are achieved quickly and economically.

WHEN & WHY USE IT?

- > Organomex™ is recommended for all crops including turf, horticultural, field crops, vegetables and fruit crops, shrubs and trees and in greenhouses and nurseries.
- > Organomex™ contains a well-balanced combination of nutrients that encourage strong and healthy growth in fruiting and flowering plants.
- > It does not exhibit any phytotoxicity, therefore ideal for seedlings, transplants and stressed plants where conventional fertilizer application may cause leaf burn or root damage.
- > Organomex™ is a source of Calcium, which is vital for cell wall formation and maintenance.
- > Kali Vinsasse is a co-product from sugar beet refining and contains 40% Potassium.
- > Organomex™ also contains Nitrogen and Phosphorus derived from a hydrolysed sugar beet.
- > It acts as a sticker/spreader for other foliar nutrients, improving the efficacy of the spray.

WHAT TO EXPECT?

- > Healthy and vigorous crops.
- > Organomex™ elicits microbial and earthworm activity in the soil.
- > Organomex™ is able to boost slow growing crops in cold, wet or waterlogged soils.
- > Good vegetative growth followed by an optimum flower and fruit set.
- > Excellent fruit and produce quality to withstand harvest conditions, transport and storage.



Black heart in celery, blossom end rot in tomatoes and bitter pit in apples due to Calcium deficiency that could be corrected with the spray of Organomex™.

Application Guidelines



Foliar rate: 2-4 L per acre depending on deficiency.

Drip irrigation rate: 2.5-5ml/L of water.

For turf apply Organomex™ at 1.5-3 oz / 1000 sq feet.

Organomex™ is for use on a variety of crops, including turf.

Shake the container and add the required amount into half-filled spraying tank while maintaining a constant agitation then add the rest of the water.

A compatibility test is recommended if the desired combination of products has not been previously used.

These products are available in 10 L jugs, 200 L drums and 1000 L IBC's.

*Organomex™ is a registered trademark of OMEX Agriculture Inc.

OMEX®

866-860-9660 /
orders@omexcanada.com



DRY SOLUBLE

Dry Soluble Powders The Fully-soluble Readily- available Nutrients

(15-30-15+TE ; 15-15-30+TE ; 20-20-20+TE ; 20-8-20+TE ; 30-10-10+TE ;
MKP 0-52-34 ; KNit 13-0-46 ; Dry Moly 47.5%)

Application Guidelines



WHAT IS IT?

- > Fully soluble and highly plant-available source of essential nutrients.
- > Extensive range of NPK ratios providing optimum feed for various stages of growth and development of a wide variety of crops.
- > Formulated with technical grade raw materials for solubility in water and a high degree of crop safety.
- > Contain secondary nutrients (Magnesium, Sulfur).
- > Contain trace elements in a chelated form to guarantee availability, compatibility, and long-lasting effect.
- > Designed for use with all types of irrigation systems.
- > Chloride- and sodium-free.

WHEN & WHY USE IT?

- > To be used to supplement a well-balanced soil-applied fertility program, especially in hydroponic and greenhouse settings.
- > Use to address or prevent any shortages during peak demand that occur during the transition from vegetative to reproductive stage or during periods of active growth or stress.
- > Classic formulations such as 20-20-20 is recommended throughout the growing season.
- > While formulations with high phosphorus and nitrogen analysis (i.e., 15-30-15) are recommended at the early stages of vegetative growth and development.
- > Formulations with high potassium analysis (15-15-30) are recommended when the crop transition from vegetative to reproductive stage and during fruiting.
- > Molybdenum is recommended every time nitrogen or phosphorus are applied in order to enhance their use efficiency or reduce the effect of frost damage.
- > Avoid tank mixing calcium with phosphate-based fertilizers or pesticides especially if injecting through an irrigation system. If such a mix is to be used choose Sequestri-Cal instead.

WHAT TO EXPECT?

- > Prevention and correction of nutrient deficiencies.
- > Increased nutrient levels in the tissues.
- > Enhanced growth and development.
- > Better yield and quality.
- > Promotion of plant health.

Conductivity of the Dry Solubles (mmhos)

	20-20-20 + micros	15-30-15 + micros	15-15-30 + micros	20-8-20 + micros
1:100				
Conductivity (mmhos)	0.41	0.60	0.53	0.48
1:150				
Conductivity (mmhos)	0.61	0.88	0.77	0.70
1:200				
Conductivity (mmhos)	0.82	1.16	1.05	0.95

The most common way of using Dry Solubles in the greenhouse is to make stock solutions and dilute them prior to use. Stock solutions can be made up by dissolving 100grams of dry solubles in 1 Liter of water. These stock solutions are then diluted with water to create feed solutions – see table for some specific recommendations. For instance, a feed solution equivalent to a 1:100 dilution of a stock solution is made by dissolving 100g Dry Solubles in 100 L water (or using 1L of stock solution in that 100 L of water).

Can be combined with other liquid fertilizers or foliar as well as with a wide range of pesticides.

The products are available in 25KG bags. Dry Moly is available in 5KG pails and in 25 KG bags.



866-860-9660 /
orders@omexcanada.com

SPECIALTY



The Water Conditioner

Application Guidelines



WHAT IS IT?

- > pHix® is a water conditioner formulated with a stabilized Sulfur.
- > It creates an ideal environment in the spraying tank for maximum herbicide efficacy by reducing water hardness to levels below 50 ppm.
- > pHix® has also an acidic nature that allows lowering the pH of the spray solution to 2.5-3.5.

WHEN & WHY USE IT?

- > Use with glyphosate at pre-burn and for crop desiccation.
- > Traditional spray water has a level of hardness of 100-800 ppm and a pH of around 7.5.
- > The Sulfur fraction in pHix® causes Gypsum to precipitate out of the water thereby improving the water quality.
- > pHix® lowers the solution pH to the point where Glyphosate cannot be chemically tied up with positively charged ions such as Calcium, Magnesium and Iron, which are the source of water hardness.
- > Improves solubility of other Phosphate-based pesticides.
- > Benefits of "facilitated diffusion" from the urea-based component of pHix®.
- > Low usage rate - a 10 L jug can treat 400 acres at 5 US gal/ac spray volume.
- > pHix® is extremely economical.

WHAT TO EXPECT?

- > Improved water quality, which is critical to herbicide performance and efficacy.
- > Effective at lowering the pH in the spray tank compared to Ammonium Sulphate.

For use with Glyphosate and other Phosphate-based pesticides requiring low pH.

It is suggested that water be tested for both pH and level of hardness. Water with higher mineral content will require higher rates of pHix®.

Always add pHix® FIRST to condition the water before adding the pesticide.

Spring Rate for pre-burn: 0.5 L/100 US gal of water.

Fall Rate as a harvest aid and desiccation of hard to kill weeds: 1.0-2.0 L/100 US gal of water.

For in-crop use during the season, use sopher95TM instead of pHix® to soften the water.

These products are available in 10 L jugs, 450 L drums and 1000 L IBC's.

*pHix® is a registered trademark of OMEX Agriculture Inc.

VARIABLES	PHIX®	AMMONIUM SULPHATE
Nitrogen	Urea - neutral Ammonium low burn potential	Ammonium higher burn potential
Sulphur	Stabilized Sulphuric acid	Sulphate
pH - Concentrate	1.0	4.5-5.0
pH - Spray Solution	2.3-3.5	5.0+
Rate	0.5 L/400 L 0.125% of the spray solution	1 L/ac 2.5-5.0% of the spray solution



866-860-9660 /
orders@omexcanada.com

SopHtner95™

The In-Crop pH Reducer and Water Softener

Application Guidelines



WHAT IS IT?

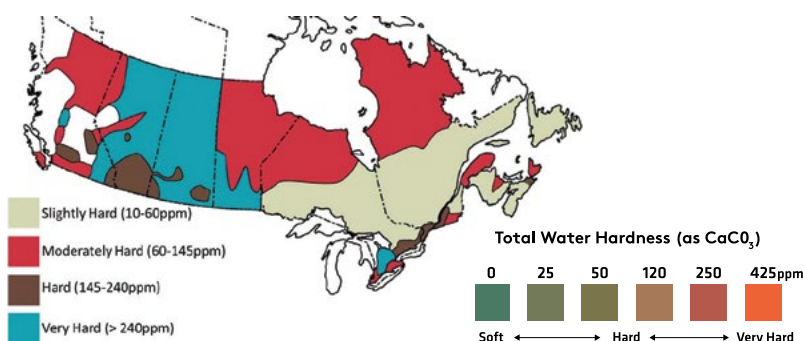
- > SopHtner95™ is a soil and water pH conditioner.
- > It controls algae and buffers the tank mix spraying solution.
- > SopHtner95™ is formulated using naturally-occurring organic acids and represents an environmentally sound management tool for lowering alkaline soil conditions.
- > It is safer for in-crop use where acidic conditions are required for better efficacy.
- > Acts as a weak chelator improving the efficiency of uptake through the leaves

WHEN & WHY USE IT?

- > Hard water often has high pH due to the level of carbonate it contains. The continuous application of high pH water tends to increase the pH of the soil.
- > Many herbicides and fungicides require an acidic solution for better efficacy.
- > By adding SopHtner95™, hardness of the water can be lowered, which reduces the possibility of soil pH raise.
- > SopHtner95™ is a pH reducer designed for soil and water applications, where the pH needs to be lowered into a more acidic range.
- > Non-Exhaustive List of herbicides often affected in the efficacy of water hardness: 2,4D Amine, Amitrole, Atrazine, Bentazone, Clethodin, Dicamba, Endothal, Fluazifop, Glufosinate Ammonium, Glyphosate, Imazamox, Imazapyr, Imazethapyr, MCPA Amine, Metsulfuron-Methyl, Paraquat, Picloram, Quizalofop, Sethoxydim and Trakoxydim.

WHAT TO EXPECT?

- > SopHtner95™ reduces the pH of the water and conditions the soil for turf, trees and ornamentals and greenhouse soil mixes.
- > The product is safer for use in-crop and to the users more than other pH reducers such as sulfuric acid and ammonium sulfate.
- > When adding SopHtner95™ to a mixture containing micronutrients, part of these elements can be chelated and made more available to the crop.



WARM & COOL SEASON TURF: Apply at 60 - 180 ml in a minimum of 2 US gal water per 1,000 sq. ft (60 - 180 ml per 100 sq meter).

SopHtner™ should be applied monthly. The ideal pH range is 6.0 - 6.5.

TREES & ORNAMENTALS: Soil Drench: 1 L per 100 US gal of tank mix (250 ml per 100 L water).

Repeat the application every 30 days or as needed. The ideal pH range 5.0 - 6.5.

GREENHOUSE GROWING MEDIA: Mix 120 - 180 ml per 1 US gal of water (120 - 180 ml per 4 L water).

If pH is not sufficiently lowered, continue to adjust pH over several waterings at a rate of 60 - 120 ml per US gal of water.

HAND WATERING: Mix ½ - ¾ teaspoon per US gal of water.

Saturate soil with solution.

ALL FIELD CROPS: Apply 100 ml per 10 US gal spray volume.

The product is available in 10 L jugs, 450 L and 1000 L IBC's.

*SopHtner95™ is a trademark of OMEX Agriculture Inc.

OMEX®

866-860-9660 /
orders@omexcanada.com

SPECIALTY

Opal[®]

INSECTICIDAL SOAP

The Insecticidal Soap

ACTIVE INGREDIENT: POTASSIUM SALTS OF FATTY ACIDS (47%)

Application Guidelines



OPAL[®] INSECTICIDAL SOAP

- > Opal[®] Insecticidal Soap is a contact insecticide that controls a variety of common garden and crop pests.
- > The easy-to-apply spray can be used indoors, outdoors and in greenhouses.
- > Opal[®] Insecticidal Soap does not persist in the environment and can be used up to the day of harvest.

MODE OF ACTION

- > Opal[®] acts in two ways: (i) suffocation and disruption of the structure and permeability of insect cell membranes, resulting in death; (ii) via direct contact with pests and has no residual insecticidal activity once the spray has dried.

PESTS AFFECTED

- > Opal[®] is effective on aphids, earwigs, mealybugs, spider mites, psyllids, pear and rose slugs (sawfly larvae), soft brown scale, whitefly, and other common garden and crop pests.

USE SITES

- > Opal[®] can be used outdoors, indoors and in greenhouses on vegetables, fruit trees, houseplants, ornamental and shade trees, bedding plants, shrubs, and flowers.

REDUCED RISK

- > Opal[®] may be used up to the day of harvest and does not persist in the environment.
- > Re-Entry Interval if used indoors: 12 hours.
- > Pre-Harvest Interval: 0 days.

Rate: 2L in 100L of water.

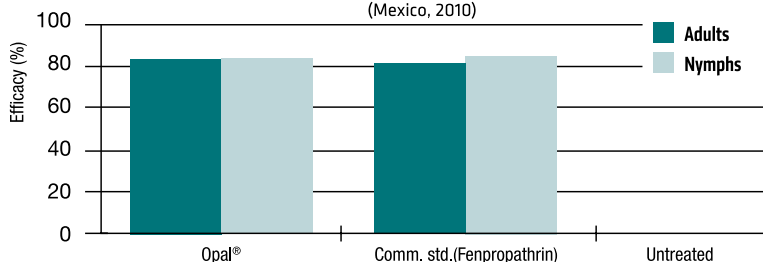
Can be used alone or mixed with fertilizers or other pesticides.

A compatibility test is recommended if the desired combination of products has not been previously used.

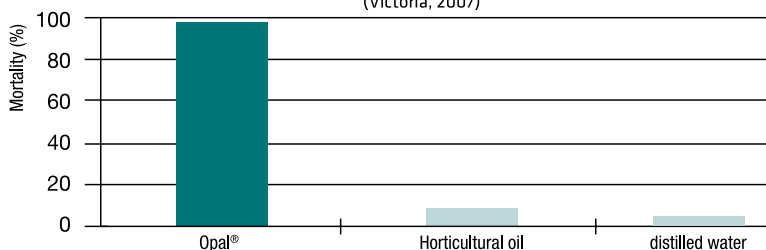
The product is available in 2 x 10 L cases, 200 L drum and 1000 L IBC's.

*Opal[®] Insecticidal Soap is a registered trademark of OMEX Agriculture Inc.

Control of Whitefly on zucchini, relative to the untreated check (Mexico, 2010)



Control of diamondback moth larvae in a lab bioassay, 2 days after treatment (Victoria, 2007)



866-860-9660 /
orders@omexcanada.com

StimPro[™] Armour[™] SW7[™]

The Crop Protector / A Silicon-Based Non-Ionic Wetting & Spreading Agent

ANALYSIS: 0-0-15 with 25% Si / 0-8-0 with 62% Si (Reg. # 2017096A, Fertilizers Act.)

WHAT IS IT?

- > StimPro Armour is a 25% potassium silicate liquid fertilizer additive.
- > SW7 (Siliphos) is a silicon-based wetter, designed to give enhanced uptake of foliar nutrients.
- > Silica is widely recognized as a beneficial element to many crops. It is transported in the xylem and deposited in the epidermal cells.
- > Silica complexes with calcium and offers two levels of protection: (i) Si inserts in the cell wall forming a physiological barrier; (ii) Si activates biochemical pathways that increase water use efficiency (WUE) and prevents water loss.
- > Silica is also known for lessening the effect of wide fluctuations of temperatures and to protect against heat.
- > Si plays an important role in the defense against biotrophs (i.e., mildew) and chewing insects.

WHEN & WHY USE IT?

- > The product is recommended on all crops including field, horticultural and vegetable crops as well as fruit trees, turf and ornamentals.
- > Use low volumes with all sprays.
- > Being a cell wall strengthener silica increases resistance to lodging caused by strong winds or heavy rains among others.
- > Silica is known to enhance P, K, Ca and Mn uptake and translocation.
- > Use to alleviate drought, salt, metal toxicity (Zn, Mn, Fe, Al, Cd, As, ...).
- > When SW7 is used at higher rates, it supplies silicon to the crop. This can have a secondary effect of deterring pests such as aphids, red spider mite, thrips and whitefly.
- > The silicon-oxygen bonds are hydrophobic and the organic clusters are hydrophilic, creating a superior wetting agent, which spreads quickly to cover a large surface area – greater than conventional surfactants.
- > Microscopic examination reveals a high degree of stomatal flooding may also occur which can extend into the intercellular spaces.
- > On contact with water, the bonds begin to degrade, and the process runs to completion after 36-72 hours depending on temperature.
- > The breakdown products are natural, being silica (e.g. sand), water and carbon dioxide.

WHAT TO EXPECT?

- > Improved growth and development especially under cold, hot and drought stress conditions.
- > Treated crops remain healthy and reach their higher potential.
- > Better water use efficiency by the crop.
- > Better seed and fruit quality.
- > Even spread of the foliar solutions on the surface of the leaves.
- > Enhanced uptake of nutrients through the leaves.
- > Good protection against certain diseases such as powdery mildew.
- > Deterrence of many chewing and sucking insects.

Application Guidelines



Low inclusion rate: 20-40 ml per acre; 75-120 ml per acre for Turf and 2ml in 10L of hydroponic solution or soil & compost.

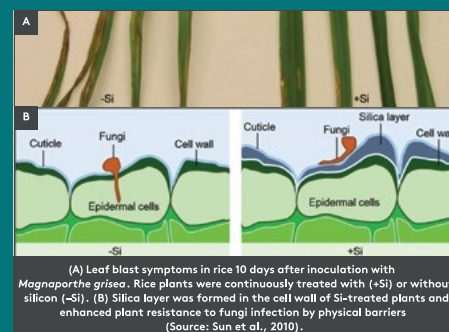
It mixes with most commonly used pesticides, growth regulators and fertilizers.

Can be applied in-furrow, through the drip or pivot.

For foliar applications, apply with minimum volume of 10 USgal/ac.

StimPro Armour is available in 10 L jugs (250 acres per jug) while SW7 is available in 12x1 L bottles (300 acres per box).

*StimPro Armour[™] is a trademark of OMEX Agriculture Inc.
*SW7[™] is a trademark of OMEX Agriculture Inc.



OMEX[®]

866-860-9660 /
orders@omexcanada.com

SPECIALTY

Yucca™

The Non-Ionic Surfactant, Spreader, Activator

ANALYSIS: 50% EXTRACT OF *YUCCA SCHIDIGERA*

WHAT IS IT?

- > CFIA-registered supplement: Reg. # 2018085A, Fertilizers Act.
- > It is a natural extract of *Yucca schidigera*, a plant that grows in some of the harshest environments.
- > Yucca™ is a rich source of steroidal saponins as well as other stress-alleviating compounds and antioxidants.
- > Saponins are natural surfactants and wetting agents.
- > When added to the spray tank, saponins from the Yucca™ extracts reduce the surface tension, hence facilitating the spread of fertilizer solution onto the entire leaf.
- > When applied onto the soil with liquid starters, Yucca™ extract acts as a wetting agent reducing the formation of dry spots or water channels. This improves nutrients and water uptake in the root zone.

WHEN & WHY USE IT?

- > The product is recommended on all crops including field, horticultural and vegetable crops as well as fruit trees, turf and ornamentals.
- > Include low doses with all sprays or soil applied fertilizers.
- > Use with fertilizers to enhance efficacy and improve hydration and coverage.
- > Saponins are known for their stimulatory activity of growth and development as well as their protective effect against biotic and abiotic stresses.

WHAT TO EXPECT?

- > Better spread and improved coverage of the foliage.
- > Improved water use efficiency (WUE).
- > Protection against dehydration, excess UV and heat.

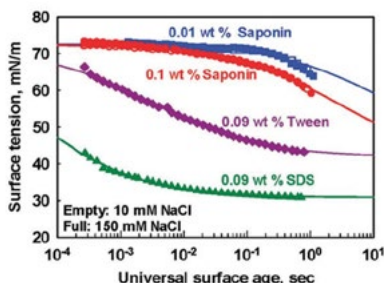


Figure 1. Effect of saponins from the Yucca extract on the breakage of surface tension as compared to other non-ionic surfactants (Source: Stanimirova et al. 2011).

Active ingredients may be trapped in spray deposits
 Strong adhesion limits contact area
 Little spray droplets movement through cuticular pores
 Limited translocation due to restricted uptake

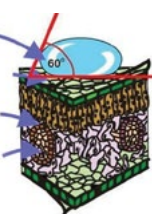
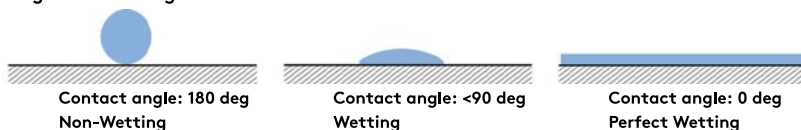


Figure 2. Effect of the addition of Yucca extract on the improvement of the contact angle and wetting of the leaves.



Application Guidelines



Rate: 10-20ml per acre.

Yucca™ can be mixed with commonly used liquid fertilizers intended for in-fur-row or foliar.

Include with all foliar sprays of fertilizers and/or pesticides.

Apply with enough water to guarantee a uniform coverage.

The product is available in 10 L jugs.

*Yucca™ is a registered trademark of OMEX Agriculture Inc.

OMEX®

866-860-9660 /
orders@omexcanada.com



SurfAct™ / Organol™

ANALYSIS: 90% a.i.

WHAT IS IT?

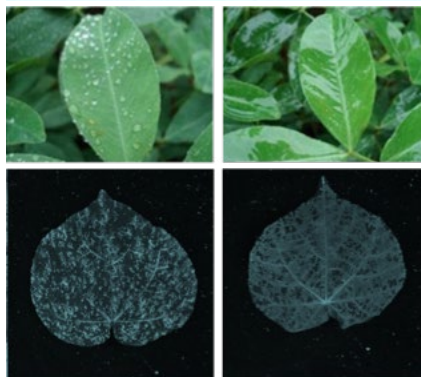
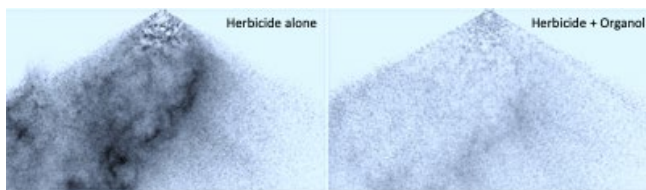
- > Spray aids, tension-active and drift reducing agents.
- > Utility modifiers that widen the conditions under which foliar sprays may be applied.
- > They change the integrity of the spray water to maximize deposition, canopy penetration and minimize drift.
- > SurfAct™ breaks the surface tension, wets the leaves, and allows the fertilizer to stick and spread evenly, hence preventing run-off or quick drying.
- > Organol™ modifies the droplets size, which helps to reduce drift when spraying in windy conditions.
- > Both SurfAct™ and Organol™ help improve nutrient absorption, translocation and availability.

WHEN & WHY USE IT?

- > The products are recommended on all crops including field, horticultural and vegetable crops as well as fruit trees, turf and ornamentals.
- > The products are fully soluble/miscible in water.
- > They are recommended for use with liquid fertilizers and/or pesticides.
- > They are used to improve the spraying conditions.

WHAT TO EXPECT?

- > Improved spraying conditions so the liquid fertilizer sticks better and spreads evenly on the leaves with less drift under wind conditions.
- > This allows for extended contact with the surface of the leaf for a better uptake of nutrients.
- > It also allows for droplets to hit target and to drift less.



36% coverage Lots of run-offs

92% Coverage

Application Guidelines



Low inclusion rate

Add SurfAct™ at 20-40 ml per acre.

Add Organol™ at 80-160ml per acre.

They mix with commonly used fertilizers and pesticides.

Can be applied by ground sprayer, through drip or pivot or by aerial applicator.

For foliar applications, apply with minimum volume of 5-10 USgal per acre.

The product is available in 10 L jugs.

*SurfAct™ is a trademark of OMEX Agriculture Inc.

*Organol™ is a trademark of OMEX Agriculture Inc.



866-860-9660 /
orders@omexcanada.com

SPECIALTY

Other Specialty Products

Kelp, Molasses, Fish, Aminos, Humic, Fulvic,...

The Natural Biostimulants and Soil Conditioners

ANALYSIS: Various (i.e., 0-0-3 with 3% fulvic)

WHAT IS IT?

- > Kelp or seaweed feeds crops with a wide range of nutrients, growth biostimulants and conditioners.
- > Seaweed diversity in terms of species and growing environment allows it to produce a wide range of anti-stress molecules that can be extracted and sustainably used as an organic, non-pollutant renewable resource to help field and row crops overcome the stresses they encounter during the growing season.
- > Kelp stimulates growth and development, provides nutrients and elicit plant natural defenses to pathogens and pests.
- > Molasses naturally contains an array of nutrients (nitrogen, phosphorus, potassium, calcium, magnesium, sulfur, zinc, manganese, copper, iron and other essential micronutrients), enzymes, and vitamins.
- > The application of molasses can help promote soil life for increased, broad-spectrum nutrient, vitamins and enzyme availability, and can enhance nutrient chelation that prevents available nutrients from leaching or volatilizing.
- > Also, molasses promote beneficial microbes growth and plant natural immunity.
- > Fish hydrolysate can stimulate soil microbial activity, improve calcium availability, and help replenish nutrient levels.
- > The shells, bones and cartilage of fish are rich in carbohydrates that can benefit plants directly or indirectly and increase nutrient density, the overall quality and storability of fruits and vegetables.
- > Fish and Seaweed contain macro- and micro-nutrients, amino acids, vitamins, trace elements, trace minerals, enzymes, naturally occurring growth promoters, and omega oils.
- > Humates, which include Humic, Fulvic, Ulmic and Humin are naturally occurring high carbon source substances that results from the oxidation of coal in a form of leonardite, lignite or humalite
- > They represent a natural nutrition source of liquid potassium enriched and are highly effective at stimulating plant metabolism.
- > Humates increase the holding capacity of soils in water and nutrients and some like fulvic acid act as a catalyst in improving nutrient absorption, translocation and availability.
- > Humates also offer protection against certain abiotic stresses such as drought and salinity due to their role in water storage and transport, and ability at helping stabilize the pH of the soil.

WHEN & WHY USE IT?

- > These products are recommended on all crops including field, horticultural and vegetable crops as well as fruit trees, turf and ornamentals.
- > The products are fully soluble in water.
- > Can be applied to the soil (Kelp, Humates, Fish, Molasses, Amino Acids) or through the foliage (Kelp, Molasses, Amino-Acids).
- > Can be used alone or mixed with commonly used fertilizers and pesticides.

WHAT TO EXPECT?

- > An improved growth and development especially under stress conditions.
- > Better uptake of pesticides and nutrients.
- > Complexation of nutrients to prevent tie-up and tank incompatibility.
- > Healthier crops often yield higher.
- > Better seed set and fruit quality.

Application Guidelines



Application rates vary by product and usage. Refer to the label for more information.

Can be applied in-furrow, through the drip or pivot, or by ground or aerial sprayer.

For foliar applications, apply with minimum volume of 10 USgal/ac.

A jar test is recommended when mixing with commonly used fertilizers and pesticides.



866-860-9660 /
orders@omexcanada.com

Mixing Order of OMEX® Products & Pesticides

Depending on the ingredients included in the formulation, pesticides are either acidic (pH < 7.0) or alkaline (pH > 7.0). OMEX® products intended to be used in combination with these pesticides are formulated to be compatible. Although we do our best to track any yearly changes in formulations of pesticides, if unacquainted, change in some of the additives and surfactants may cause changes in the physico-chemical properties of the products, hence leading to incompatibilities with our fertilizers.

Compatibility charts of the most commonly used combinations are listed on page 4-6. We highly recommend a jar test for any combination that is not listed. Please arrange with your local OMEX® rep for further testing.

Sudden changes in pH may cause incompatibility in the spraying tank. The order of adding the products is crucial. The following step-by-step guidelines are highly recommended:

1. Fill the tank with clean water up to 80%-90%
2. Add the water conditioner (if required) while filling with water
3. Turn on the agitation
4. Add the herbicides, fungicides or insecticides and continue to mix thoroughly
5. Add other adjuvants (as required)
6. Add the AS, UAN (if required)
7. Add the OMEX® fertilizer
8. Add the remainder water

Compatibility Charts

COMPATIBILITY OF SEED TREATMENTS AND OMEX® PRIMERS WHEN SLURRIED (10=BEST AND 1=WORST)

FUNGICIDES	OMEX® Products					
	Primer Zn®	Primer Cu®	Primer Mn®	Pulse Primer®	Pulse Pak™	Primer Soybean®
Allegiance *	9	9	7	8	8	8
Anchor	6	5	5	9	7	9
Apron Maxx	-	-	-	10	10	10
Apron Advance	-	-	-	9	9	9
Charter	9	9	9	-	-	-
Cruiser Maxx Beans	-	-	-	10	10	10
Cruiser Maxx Cereals (CMC)	9	9	8	-	-	-
CMC + ProSeed 480 FS	8	8	7	-	-	-
CMC + Vibrance 500 FS (V)	8	8	7	-	-	-
CMV Cereals	8	8	7	-	-	-
CMV Cereals + ProSeed 480 FS	8	8	7	-	-	-
CMV Quattro ^o	7	9	7	-	-	-
CMV Beans	-	-	-	10	10	10
DB Red	7	3	6	-	-	-
Dividend XL**	9	8	9	-	-	-
Dividend XL RTA [§]	4	4	4	-	-	-
Evergol Extend	-	-	-	10	3	10
Gemini	9	9	9	-	-	-
Insure †	9	6	9	-	-	-
Intego Solo	-	-	-	9	9	9
ProSeed	9	9	8	-	-	-
Rancona †	4	6	4	-	-	-
Raxil MD	9	9	9	-	-	-
Raxil WW	9	9	9	-	-	-
Raxil Pro	9	9	8	-	-	-
Raxil Pro Shield	9	9	9	-	-	-
Trilex AL	-	-	-	10	10	10
Trilex Evergol	-	-	-	10	3	10
Vibrance# 500 FS	9	9	8	-	-	-
Vibrance Quattro ^o	7	9	7	-	-	-
Vitaflo 280	7	4	7	9	7	9

General Recommendations:

- > Treat sequentially if possible
- > Always do a jar test to assess compatibility
- > Do not slurry products over an extensive period of time
- > Keep the mixes agitated at all times
- > Do not treat directly into a seeder
- > Dilute with water (1 ml/kg of seed) where required
- > Avoid Thiram based products

A rating greater than 6 is useable. If below 6, dilute with water to thin the solution. If mixing products in advance of use, add water (1 ml/kg seed) to maintain consistency.

A colour change may occur with the use of Primer Cu®.

* The mixes of Allegiance with Primer Mn®, Pulse Primer®, Pulse Pak™ & Primer Soybeans® tend to separate overtime but go easily back in suspension upon agitation.

** The rating was done with the commercial formula from 2024.

§ Avoid mixing in the same vessel. Recommended only as a simultaneous or sequential application.

‡ The mix Insure with Primer Cu® tends to thicken overtime.

† Not recommended with Primer Zn® and Primer Mn®. The mix tends to thicken.

Add Vibrance first then the required water then Primer Zn/Cu/Mn® second and stir well.

o The mixes of Primer Zn/Mn® tend to thicken with Vibrance Quattro and Cruiser Vibrance Quattro. Dilute with water.

Results may vary, so all users should do their own compatibility testing. The above information is not intended as a guarantee of product compatibility.

All compatibility tests were conducted using the higher recommended rates of herbicides and foliars in 10 gal of spraying water volume. Results may vary according to the hardness of the water. A rating equal or greater than 6 is useable.

IMPORTANT: The foregoing represents laboratory results. It is recommended that users conduct their own compatibility testing. Laboratory tests may not be indicative of field results depending on local conditions. The above information is not intended as a guarantee of product compatibility



Scan this code for more information.

Compatibility Charts

COMPATIBILITY OF HERBICIDES AND OMEX® FOLIARS WITH SIMULTANEOUS MIXING (10=BEST AND 1=WORST)

HERBICIDES	OMEX® Products												
	C3®	P3™	Nutri-Boost®	Spray Sol'n 6-18-10	uPtaKe IC 5-25-5	uPtaKe IC 13-7-4	uPtaKe IC 8-32-5	SuperB®	KB78®	FA Cu	SuperMn+	Lucky 13™	C3® + SuperB®
2,4-DB Amine	9	9	9	9	9	9	8	9	9	0	8	8	9
2,4-DB Ester	9	9	9	9	9	9	8	9	9	7	8	8	9
Accord										9			
Achieve Liquid	9	7	9	9	9	7	7	8	8	9	8	7	9
Aim EC	8	9	8	8	9	7	9	7	7	5	9	8	7
Ares	9	9	9	9	9	9	9	9	9	9	9	9	9
Ares + Merge	9	9	9	9	9	9	9	9	9	9	9	9	9
Armezon	9	9	9	9	9	8	9	9	9	5	9	9	9
Assert	9	9	9	9	9	9	9	9	9	9			
Assure	9	9	9	9	9	9	9	9	9	9			
Attain	9	9	9	9	9	9	9	9	9	9			
Authority 480	8	8	8	8	8	8	8	9	9	8			
Axial	9	9	9	9	9	9	9	9	9	8			
Barricade II	9	9	9	9	9	9	9	9	9				
Basagran	9	9	9	9	9	9	9	9	9	0	7	9	9
Basagran + Reflex	9	9	9	9	9	9	9	9	9	0	6	9	9
Benvel II	9	8	9	9	9	9	9	9	9	9	6	9	9
Bison	9	9	9	9	9	9	9	9	9	5	9	9	9
Buctril M	9	9	9	9	9	9	9	9	9	9			
Buctril M + Thumper	9	9	9	9	9	9	9	9	9	9			
Centurion	8	8	9	9	9	8	8	8	8	8	8	8	8
Curtail M	9	8	9	9	8	8	8	8	8	9	8	7	8
Embutox	8	8	8	9	9	8	8	8	8	8	9	9	8
Enforcer M	9	9	9	9	9	9	9	9	9	9			
Equinox	9	9	9	9	9	9	9	9	9	8	9	9	9
Estprop	8	9	9	9	9	8	7	8	8	8	7	9	9
Esteem	9	9	9	9	9	9	9	9	9	5	8	9	9
Everest 2.0	9	9	9	9	9	9	9	9	9	9	9	9	9
Express SG	9	7	9	9	8	8	8	8	8	9	8	8	8
Express SG & 2, 4-D Ester	9	7	9	9	8	8	8	8	8	8	8	8	8
Express SG	8	4	8	8	8	8	8	6	6	4	5	5	6
Frontline XL	8	8	7	8	8	8	7	8	8	9	8	8	8
Frontline XL + Bumper 418 EC	9	7	7	9	9	9	8	9	9	7	8	9	9
Glyphosate													
>Roundup	9	9 but NR	9	9	9	9	7	9	9	9	9	9	9
>Touchdown Total	9	9 but NR	9	9	9	9	7	9	9	9	9	9	9
>Weather Max	9	9 but NR	9	9	9	9	7	9	9	9	9	9	9
>Cheminova	9	9 but NR	9	9	9	9	7	9	9	9	9	9	9
>Traxion	9	9 but NR	9	9	9	9	7	9	9	9	9	9	9
>RT540	9	9 but NR	9	9	9	8	9	9	9	9	9	9	9
>Mavrick III	9	9 but NR	9	9	9	9	9	9	9	9	9	9	9
>Transhorb HC	8	9 but NR	8	8	8	8	8	9	9	9	9	8	9
Interline	9	9	9	9	9	9	5	9	9	7	9	9	9
Harmony										9			
Heat + Amigo/Merge	9	9	8	9	9	9	9	9	9	9	9	9	9
Horizon										9			
Infinity	9	9	9	9	9	9	8	9	9	9	6	9	9
Laudis	9	9	9	9	9	9	8	9	9	4	5	7	9
Liberty	9	9	9	9	9	9	8	8	8	9	9	8	9
Liberty + Centurion + Amigo + Decis	9	9	9	9	9	9	9	9	9	8	9	9	9
Lontrel	9	9	9	9	9	9	7	8	8	9	8	8	9
MCPA	9	9	9	9	9	9	9	9	9	9	4	9	8
MCPA + Prestige	9	9	9							5			
Octtain XI	8	8	8	8	8	8	8	8	8	8	8	8	8
Odyssey	9	7	9	9	9	8	7	7	7	9	8	7	8
Odyssey + Lontrel	9	9	9	9	9	9	9	9	9	9	9	9	9
Odyssey + Merge	9	9	8	9	9	9	9	9	9	9	9	9	9
Odyssey Ultra	9	9	9	9	9	9	9	9	9	9	9	9	9
Outshine	9	8	9	9	9	9	9	9	9	4	9	9	9
Poast Ultra	8	8	8	8	8	8	8	8	8	9	8	8	8
Pixxaro	9	9	9	9	9	9	9	8	8	9	9	9	9
Prestige	9	9	9	9	9	9	9	9	9	8	9	8	9

Compatibility Charts

CONTINUED: COMPATIBILITY OF HERBICIDES AND OMEX® FOLIARS WITH SIMULTANEOUS MIXING (10=BEST AND 1=WORST)

HERBICIDES	OMEX® Products												
	C3®	P3™	Nutri-Boost®	Spray Sol'n 6-18-10	uPtaKe IC 5-25-5	uPtaKe IC 13-7-4	uPtaKe IC 8-32-5	SuperB®	KB78®	FA Cu	SuperMn+	Lucky 13™	C3® + SuperB®
Prestige XC	9	9	9	9	9	9	9	9	9	9	9	9	9
Puma Advance	9	9	9	9	9	9	6	8	8	9	8	7	8
Pursuit	9	9	9	9	9	9	8	9	9	9	8	8	8
Python	9	9	9	9	9	9	9	9	9	5	9	9	9
Refine SG	9	9	9	9	9	9	9	9	9	9	9	9	9
Refine M	9	9	9	9	9	9	9	9	9	9	9	9	9
Sencor	9	7	8	9	9	9	7	7	7	9	8	7	9
Simplicity	9	7	9	9	8	8	5	7	7	9	8	8	8
Simplicity GoDry	8	9	9	8	9	9	9	8	9	9	9	9	9
Solo	9	9	9	9	9	9	9	9	9	9	9	9	9
Solo + Merge	9	9	9	9	9	9	9	9	9	9	9	9	9
Solo + Basagran	9	9	9	9	9	9	9	9	9	9	9	9	9
Solo + Basagran + UAN	9	9	9	9	9	9	9	9	9	9	9	9	9
Solo + Lontrel dry	9	9	9	9	9	9	9	9	9	9	9	9	9
Solo ADV	6	9	9	9	9	9	9	9	9	9	9	9	9
Solo Ultra	9	9	9	9	9	9	9	9	9	7	9	9	9
Spectrum										9			
Stellar										9			
Stellar XL							9			9			
Thumper	9	7	9	9	9	8	8	7	7	8	8	8	8
Trophy	9	8	9	9	9	9	8	7	7	9	8	7	8
Tundra	9	9	9	9	9	9	9	9	9	9			
Varro	8	8	7	7	8	8	8	8	8	8			
Velocity m3	8	8	9	9	9	9	9	9	9	8	9	8	8
Viper	9	9	9	9	9	9	9	9	9	9	8	9	9
Viper ADV	9	8	9	8	8	9	9	9	9	8	7	8	9
XtendiMax	9	9	8	8	8	9	8	9	9	9	9	9	9
Zidua	5	5	5	5	5	5	5	5	5	5	5	5	5

All compatibility tests were conducted using the higher recommended rates of herbicides and foliar in 10 gal of spraying water volume. Results may vary according to the hardness of the water. Although P3™ is compatible with most Glyphosate products it is not recommended (NR), C3® is recommended instead. If zinc is required with glyphosate spray use Omex Zn™ instead of Foliar Advance Zn™ or Zintake™. A rating equal or greater than 6 is useable.

COMPATIBILITY OF FUNGICIDES AND OMEX® FOLIARS WITH SIMULTANEOUS MIXING (10=BEST AND 1=WORST)

FUNGICIDES	OMEX® Products											
	Super Mnt+®	FA Cu	FA Zn	Zintake™	K50™	CalMax®	SuperB®	KB78®	uPtaKe IC 5-25-5	uPtaKe IC 8-32-5	uPtaKe IC 13-7-4	Cytokelp™
Acapela	9	7	7	7	9	8	9	9	9	9	9	8
Astound	6	8	7	5	8	8	8	8	9	9	9	8
Bravo 500	9	8	9	9	8	8	8	8	9	9	9	
Bumper 418 EC	8	8	8	8	8	8	8	8	9	9	9	8
Caramba	9	9	9	9	9	9	9	9	9	9	9	9
Dithane		9										
Folicur	6	7	7	7	8	7	8	8	9	9	9	7
Headline	9	8	9	9	8	8	8	8	9	9	9	8
Lance	6	8	7	8	8	8	8	8	9	9	9	8
Pavise 480 SC	9	5	9	9	9	9	9	9	9	9	8	9
Priaxor DS		7						7				7
Proline	8	8	7	7	9	8	8	8	9	9	9	8
Prosaro 250 EC	8	8	9	9	9	8	8	9	9	9	9	9
Ronilan		9										
Quadris	8	8	8	8	8	8	8	8	9	9	9	8
Quilt	8	7	8	8	8	8	9	9	9	9	9	7
Stratego 250EC	9	9	9	9	9	9	9	9	9	9	9	8
Tilt 250	9	7	9	8	8	8	8	9	9	9	9	8
Twinline	8	8	8	8	9	8	9	9	9	9	9	8
Vertisan							9	9				
Viatude	8	5	8	8	8	5	5	5	8	5	8	7

All compatibility tests were conducted using the higher recommended rates of herbicides and foliar in 10 gal of spraying water volume. Results may vary according to the hardness of the water. A rating equal or greater than 6 is useable.

Compatibility of Insecticides and OMEX® Foliars with Simultaneous Mixing (10=Best and 1=Worst)

HERBICIDES	OMEX® Products								
	C3®	P3™	uPtaKe IC 5-25-5	uPtaKe IC 8-32-5	uPtaKe IC 13-7-4	K25®	SuperB®	SuperMn+	FA Cu
Admire	9	9	9	9	9	9	9	9	9
Cygon	9	9	9	9	9	9	9	9	9
Decis	9	9	9	9	9	9	9	9	9
Malathion	9	9	9	9	9	9	9	9	9
Matador	9	9	9	9	9	9	9	9	9
Lagon	9	9	9	9	9	9	9	9	9
Lorsban	9	9	9	9	9	9	9	9	9

All compatibility tests were conducted using the higher recommended rates of herbicides and foliar in 10 gal of spraying water volume. Results may vary according to the hardness of the water. A rating equal or greater than 6 is useable.

OMEX[®]

